



**FIRE FIGHTING  
EQUIPMENT**

**PRODUCT  
CATALOGUE  
2016**



PRODUCT CATALOGUE

- Fire hoses ..... 3
- Fire fittings ..... 8
- Valves ..... 14
- Special fittings ..... 16
- Gasket ..... 18
- Hydrant's spanner ..... 19
- Nozzles ..... 20
- PERROT Coupling's ..... 22
- PELET Accessories ..... 23



Fire Fighting Equipment Company  
**LESZEK KORUS**

44-280 Rydułtowy, ul. Raciborska 279  
tel./fax: +48 32 457 88 65  
e-mail: biuro@korus.pl

[www.korus.pl](http://www.korus.pl)



**HYDRANT FIRE HOSE FOR CABINETS EN 14540 H-25**

**Features:**

- Multi-purpose lay flat hose especially for fire cabinets and marine hose. Circular woven jacket out of 100% high tenacity synthetic yarn with an inner liner made out of PVC material.
- **Construction:** Single jacket, 100% high tensile strength virgin polyester filament yarns, both wrap and filler; PVC liner ensures the minimum friction for a maximum flow.
- **Certificate: EN 14540**

TECHNICAL PARAMETERS				
Type	H-25-15-B	H-25-15-ŁA	H-25-20-B	H-25-20-ŁA
Inner diameter (mm)	25			
Length (m)	15	15	20	20
Weight of the hose without fittings (kg)	1.31	-	1.75	-
Weight of the hose with aluminium fittings (kg)	-	1.50	-	1.90
Operating temperature range	-30 do +70°C			
Working pressure (maximum) (BAR)	15			
Bursting pressure (minimum) (BAR)	45			



**HYDRANT FIRE HOSE FOR CABINETS EN 14540 H-52**

**Features:**

- Multi-purpose lay flat hose especially for fire cabinets and marine hose. Circular woven jacket out of 100% high tenacity synthetic yarn with an inner liner made out of PVC material.
- **Construction:** Single jacket, 100% high tensile strength virgin polyester filament yarns, both wrap and filler; PVC liner ensures the minimum friction for a maximum flow.
- **Certificate: EN 14540**

TECHNICAL PARAMETERS				
Type	H-52-15-B	H-52-15-ŁA	H-52-20-B	H-52-20-ŁA
Inner diameter (mm)	52			
Length (m)	15	15	20	20
Weight of the hose without fittings (kg)	3.45	-	3.95	-
Weight of the hose with aluminium fittings (kg)	-	4.60	-	5.10
Operating temperature range	-30 do +70°C			
Working pressure (maximum) (BAR)	15			
Bursting pressure (minimum) (BAR)	45			



**WATERPUMPS' FIRE HOSE W-52**

**Features:**

- Multi-purpose lay flat hose especially for waterpumps and autopumps. Circular woven jacket out of 100% high tenacity synthetic yarn with an inner liner made out of PVC material.
- **Construction:** Single jacket, 100% high tensile strength virgin polyester filament yarns, both wrap and filler; PVC liner ensures the minimum friction for a maximum flow.
- **Certificate: CNBOP** certificate for hoses for waterpumps and autopumps.

TECHNICAL PARAMETERS		
Type	W-52-20-B	W-52-20-ŁA
Inner diameter (mm)	52	
Length (m)	20	
Weight of the hose without fittings (kg)	3.78	-
Weight of the hose with aluminium fittings (kg)	-	4.20
Operating temperature range	-30 do +70°C	
Working pressure (maximum) (BAR)	15	
Bursting pressure (minimum) (BAR)	45 (maximum > 51 according to CNBOP)	





### WATERPUMPS' FIRE HOSE W-75



**Features:**

- Multi-purpose lay flat hose especially for waterpumps and autopumps. Circular woven jacket out of 100% high tenacity synthetic yarn with an inner liner made out of PVC material.
- **Construction:** Single jacket, 100% high tensile strength virgin polyester filament yarns, both wrap and filler; PVC liner ensures the minimum friction for a maximum flow.
- **Certificate:** CNBOP certificate for hoses for waterpumps and autopumps.

TECHNICAL PARAMETERS		
Type	W-75-20-B	W-75-20-ŁA
Inner diameter (mm)	75	
Length (m)	20	
Weight of the hose without fittings (kg)	7.80	-
Weight of the hose with aluminium fittings (kg)	-	8.80
Operating temperature range	-30 do +70°C	
Working pressure (maximum) (BAR)	15	
Bursting pressure (minimum) (BAR)	45	

### WATERPUMPS' FIRE HOSE W-110



**Features:**

- Multi-purpose lay flat hose especially for waterpumps and autopumps. Circular woven jacket out of 100% high tenacity synthetic yarn with an inner liner made out of PVC material.
- **Construction:** Single jacket, 100% high tensile strength virgin polyester filament yarns, both wrap and filler; PVC liner ensures the minimum friction for a maximum flow.
- **Certificate:** CNBOP certificate for hoses for waterpumps and autopumps.

TECHNICAL PARAMETERS		
Type	W-110-20-B	W-110-20-ŁA
Inner diameter (mm)	110	
Length (m)	20	
Weight of the hose without fittings (kg)	16.30	-
Weight of the hose with aluminium fittings (kg)	-	19.10
Operating temperature range	-30 do +70°C	
Working pressure (maximum) (BAR)	12	
Bursting pressure (minimum) (BAR)	36	

### WATERPUMPS' FIRE HOSE W-150



**Features:**

- Multi-purpose lay flat hose especially for waterpumps and autopumps. Circular woven jacket out of 100% high tenacity synthetic yarn with an inner liner made out of PVC material.
- **Construction:** Single jacket, 100% high tensile strength virgin polyester filament yarns, both wrap and filler; PVC liner ensures the minimum friction for a maximum flow.

TECHNICAL PARAMETERS		
Type	W-150-20-B	W-150-20-ŁA
Inner diameter (mm)	150	
Length (m)	20	
Weight of the hose without fittings (kg)	17.00	-
Weight of the hose with aluminium fittings (kg)	-	21.50
Operating temperature range	-30 do +70°C	
Working pressure (maximum) (BAR)	12	
Bursting pressure (minimum) (BAR)	36	



### FIRE HOSE WITH OUTER COATING W-52-RED

TECHNICAL PARAMETERS		
Type	W-52-20-B	W-52-20-ŁA
Inner diameter (mm)	52	
Length (m)	20	
Weight of the hose without fittings (kg)	4.16	-
Weight of the hose with aluminium fittings (kg)	-	4.75
Operating temperature range	-30 do +70°C	
Working pressure (maximum) (BAR)	15	
Bursting pressure (minimum) (BAR)	45	



### FIRE HOSE WITH OUTER COATING W-75-RED

TECHNICAL PARAMETERS		
Type	W-75-20-B	W-75-20-ŁA
Inner diameter (mm)	75	
Length (m)	20	
Weight of the hose without fittings (kg)	8.40	-
Weight of the hose with aluminium fittings (kg)	-	9.26
Operating temperature range	-30 do +70°C	
Working pressure (maximum) (BAR)	15	
Bursting pressure (minimum) (BAR)	45	



### FIRE HOSE WITH OUTER COATING W-110-RED

TECHNICAL PARAMETERS		
Type	W-110-20-B	W-110-20-ŁA
Inner diameter (mm)	110	
Length (m)	20	
Weight of the hose without fittings (kg)	16.80	-
Weight of the hose with aluminium fittings (kg)	-	19.60
Operating temperature range	-30 do +70°C	
Working pressure (maximum) (BAR)	12	
Bursting pressure (minimum) (BAR)	36	



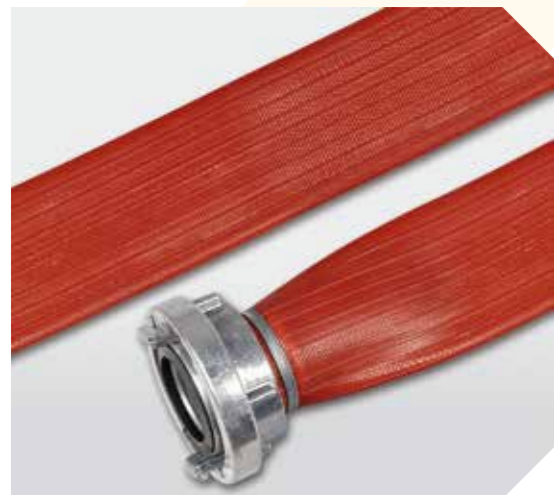


### FIRE HOSE FOR CONSTRUCTIONS 8 BARS W-52



TECHNICAL PARAMETERS			
Type	W-52-20-B	W-52-20-LA	
Inner diameter (mm)	52		
Length (m)	20		
Weight of the hose without fittings (kg)	2.50	-	
Weight of the hose with aluminium fittings (kg)	-	3.10	
Operating temperature range	-30 do +70°C		
Working pressure (maximum) (BAR)	8		
Bursting pressure (minimum) (BAR)	16		

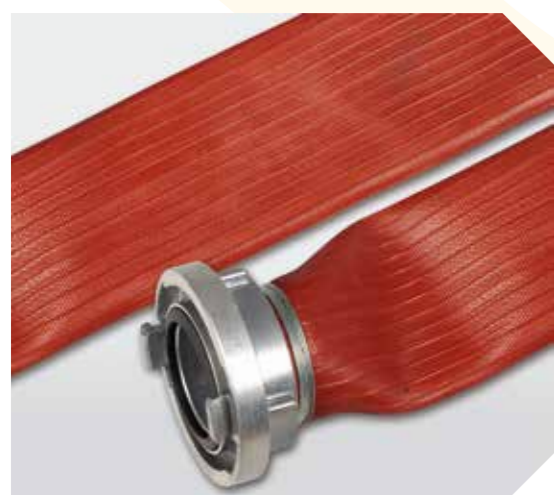
### RUBBER COVERED HOSE – 52



Rubber Hose (Rubber covered hose) is usually used for delivery the oil products, it has very good oil and chemical resistance, anti-corrosion and UV-resistance performance.

TECHNICAL PARAMETERS			
Type	W-52-20-B	W-52-20-LA	
Inner diameter (mm)	52		
Length (m)	20		
Weight of the hose without fittings (kg)	8.20	-	
Weight of the hose with aluminium fittings (kg)	-	8.80	
Operating temperature range	-30 do +70°C		
Working pressure (maximum) (BAR)	15		
Bursting pressure (minimum) (BAR)	45		

### RUBBER COVERED HOSE – 75



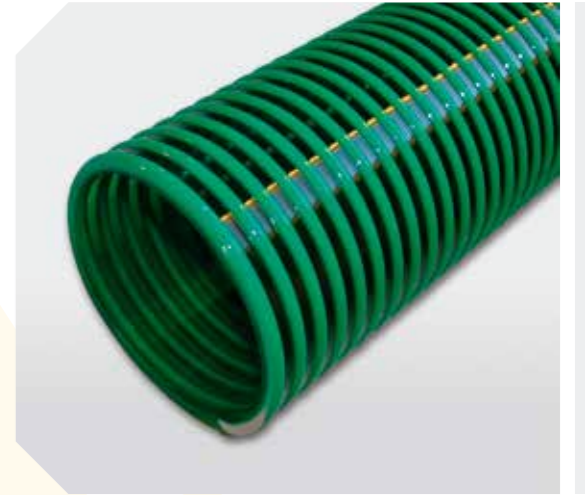
Rubber Hose (Rubber covered hose) is usually used for delivery the oil products, it has very good oil and chemical resistance, anti-corrosion and UV-resistance performance.

TECHNICAL PARAMETERS			
Type	W-75-20-B	W-75-20-LA	
Inner diameter (mm)	75		
Length (m)	20		
Weight of the hose without fittings (kg)	11.20	-	
Weight of the hose with aluminium fittings (kg)	-	12.20	
Operating temperature range	-30 do +70°C		
Working pressure (maximum) (BAR)	15		
Bursting pressure (minimum) (BAR)	45		



### SUCTION HOSE

Suction and discharge hose used for pumping water and light chemical solutions in the construction, rental, agricultural, and irrigation industries.



TECHNICAL PARAMETERS					
Inner diameter	Outer diameter	Wall thickness	Weight	Maximum working pressure	Permitted underpressure
toleration (+/- 1%)	toleration (+/- 2%)	Be measured at coil (+/- 5%)	(+/- 5%)	In temp. 20°C	in temp. 20°C
[mm]	[mm]	[mm]	[kg/m]	[bar]	[m H2O]
25	33.2	4.1	0.48	7.0	8
32	40.2	4.1	0.59	5.5	8
35	43.2	4.1	0.61	5.0	8
40	48.4	4.2	0.74	4.5	8
45	53.4	4.2	0.85	4.5	8
50	58.4	4.2	0.99	4.0	8
60	71.4	5.7	1.25	4.0	8
63	74.4	5.7	1.30	4.0	8
75	86.4	5.7	1.45	3.5	8
80	91.6	5.8	1.55	3.5	8
90	102.0	6.0	2.10	3.5	8
100	112.0	6.0	2.20	3.5	8
110	124.0	7.0	3.00	3.0	8
126	141.5	7.8	3.45	3.0	7
150	166.8	8.6	4.55	2.5	7



### HOSE CONNECTORS SYSTEM - STORZ



**Connectors** are designed for quick assembly of hoses and pumps' adapters, hydrants, valves, nozzles and other fire-fighting equipment.

TECHNICAL PARAMETERS				
Size	Catch span	Hose diameter	Length of sleeve	Weight
25	31 mm	25 mm	55 mm	-
42	66 mm	42 mm	55 mm	-
45	66 mm	45 mm	55 mm	-
52	66 mm	38 mm	55 mm	-
52	66 mm	52 mm	55 mm	0.6 kg
65	66 mm	52 mm	66 mm	-
75	89 mm	75 mm	60 mm	1.01 kg
100	133 mm	100 mm	-	-
110	133 mm	110 mm	103 mm	2.57 kg



TECHNICAL PARAMETERS				
Size	Catch span	Hose diameter	Length of sleeve	Weight
25	31 mm	25 mm	56 mm	0.18 kg
52	66 mm	52 mm	90 mm	0.7 kg
75	89 mm	52 mm	66 mm	-
75	89 mm	75 mm	124 mm	-
100	133 mm	101 mm	130 mm	-
110	133 mm	110 mm	170 mm	-

### CAPS

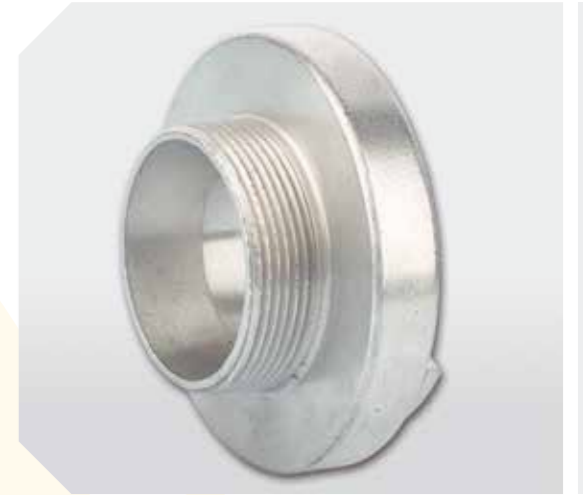


**Caps** are designed for plugging firefighting equipment ending with STORZ adapters.

TECHNICAL PARAMETERS			
Size	Catch span	Height	Weight
25-DS	31 mm	28 mm	0.09 kg
52-DS	66 mm	36 mm	0.35 kg
75-DS	89 mm	40 mm	0.53 kg
110-DS	133 mm	46 mm	1.31 kg



### MALE THREAD ADAPTERS



**Adapters** with external thread are used to connect the equipment ended with internal thread with hoses.

TECHNICAL PARAMETERS				
Size	Catch span	External thread	Diameter	Weight
25	31 mm	G 1	55 mm	-
25	31 mm	3/4"	55 mm	-
25/D-DS	31 mm	G 1	18 mm	0.07 kg
52	66 mm	M60x2	32 mm	0.25 kg
52	66 mm	G 1	98 mm	-
52	66 mm	G1 1/4	98 mm	-
52	66 mm	G1 1/2	98 mm	-
52	66 mm	G 2	98 mm	-
52/C	66 mm	G1 1/2	32 mm	0.24 kg
52/C	66 mm	G 2	32 mm	0.22 kg
75	89 mm	M80x2	64.5 mm	0.44 kg
75	89 mm	G2 1/2	126 mm	-
75	89 mm	G 2	126 mm	-
75	89 mm	M80x2	-	-
75/B	89 mm	G2 1/2	64.5 mm	0.4 kg
75/B	89 mm	G 3	64.5 mm	0.38 kg
110	133 mm	G 4	182 mm	-
110/A-DS	133 mm	G 4	100 mm	0.96 kg
110-DS	133 mm	M120x2	100 mm	0.96 kg

### FEMALE THREAD ADAPTERS



**Adapters with internal thread** are used to connect the equipment ended with external thread with hoses.

TECHNICAL PARAMETERS				
Size	Catch span	External thread	Diameter	Weight
25	31 mm	3/4"	-	-
25	31 mm	G 1	18 mm	0.07 kg
52	66 mm	G 1	-	-
52	66 mm	G1 1/4	-	-
52	66 mm	G1 1/2	44.5 mm	0.24 kg
52	66 mm	G 2	44.5 mm	0.24 kg
75	89 mm	G 2	64.5 mm	-
75	89 mm	G2 1/2	64.5 mm	0.39 kg
75	89 mm	G 3	64.5 mm	0.47 kg
110	133 mm	G 4	100 mm	0.93 kg
110	133 mm	G4 1/2	100 mm	-



### BRASS ADAPTER

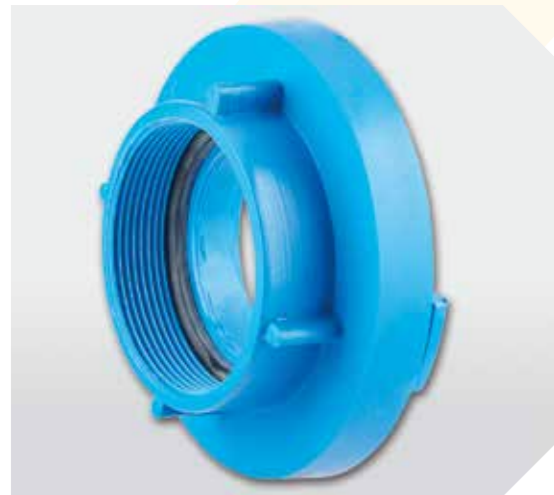


**Brass adapter** with internal thread are used to connect the equipment ended with external thread with hoses.

#### TECHNICAL PARAMETERS

- Size: 52mm
- External thread: 2"
- Material: MO-59
- Working pressure: 2,5 MPa
- Weight: 0,74 kg

### ABS ADAPTER



**ABS adapters** with internal thread are used to connect the equipment ended with external thread with hoses.

#### TECHNICAL PARAMETERS

Size	Catch span	External thread	Round thread
52 mm	66 mm	GW 2"	44,5 mm
75 mm	89 mm	GZ 2,5"	64,5 mm
110 mm	133 mm	GZ 4"	100 mm

### ABS CAP



**Caps** are designed for plugging firefighting equipment ending with STORZ adapters.

#### TECHNICAL PARAMETERS

Size	Catch span	Height	Weight
52 mm	66 mm	36 mm	0.14 kg
75 mm	89 mm	40 mm	0.24 kg
110 mm	133 mm	46 mm	0.60 kg



### FIRE HYDRANT CAP

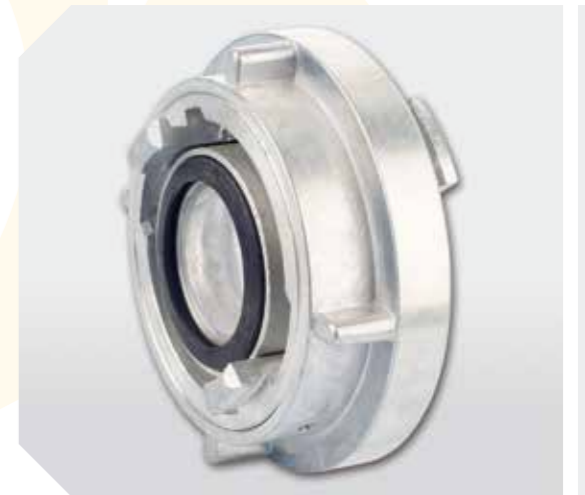


**Hydrant cap** with a triangle is used to close hydrant caps with a metal sealing surface.

#### TECHNICAL PARAMETERS

Size	Round thread	Height	Weight
52/C	Rd 50 x 1/6	43 mm	0.30 kg
75/B	Rd 65 x 1/6	45 mm	0.46 kg
110/A	Rd 105 x 1/4	52 mm	0.99 kg

### SWITCHES



**Swiches** are used to connect hoses with various internal diameter or to connect hoses to fittings with a different size than the hoses' adapters.

#### TECHNICAL PARAMETERS

Size	Catch span	Height	Weight
52-25	66/31 mm	33.5 mm	0.37 kg
75-52	89/66 mm	39 mm	0.63 kg
110-75	133/89 mm	45 mm	1.66 kg

### CASE



**Case** are designed to connect and repair fire pipes. Available in size: 25 mm, 52 mm, 75 mm, 110 mm.

#### TECHNICAL PARAMETERS

Size	Hose diameter	Length	Weight
25	According to requirements of clients		
52	According to requirements of clients		
75	According to requirements of clients		
110	According to requirements of clients		



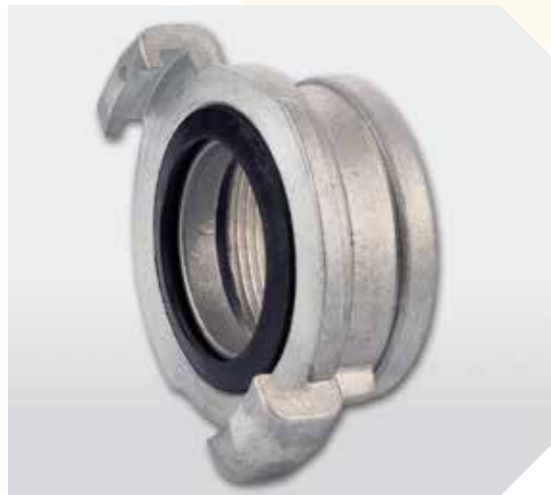
### RUSSIAN COUPLINGS (GOST)



Couplings for hoses (DS)

TECHNICAL PARAMETERS			
Size	Catch span	Hose diameter	Weight
50	78 mm	52 mm	0.28 kg
70	95 mm	65 mm	0.48 kg
80	107 mm	75 mm	0.65 kg
100-DS	140 mm	100 mm	1.00 kg
125-DS	166 mm	125 mm	1.76 kg
150	176 mm	150 mm	2.45 kg

### ADAPTERS WITH FEMALE AND MALE THREAD



TECHNICAL PARAMETERS			
Size	Catch span	Female thread	Weight
50	78 mm	G 2	0.20 kg
70	95 mm	G2 1/2	0.33 kg
80	107 mm	G 3	0.42 kg
100-DS	140 mm	G 4	0.70 kg
125-DS	166 mm	G 5	1.10 kg
150	176 mm	G 6	1.25 kg

### ADAPTER'S CAPS



TECHNICAL PARAMETERS		
Size	Catch span	Weight
50	78 mm	0.26 kg
70	95 mm	0.56 kg
80	107 mm	0.60 kg
100	140 mm	0.80 kg
125	166 mm	1.20 kg
150	176 mm	1.90 kg



### REDUCING COUPLING Ø52/25



Reducing coupling Ø52/25 is used to connect the 25 semi-rigid hoses with hydrant valves DN-50 in hydrant cabinets and other devices ending with 52 STORZ couplings.

TECHNICAL PARAMETERS
• According to PN-91/M-51021
• Tap's strength – 3,5 MPa
• Weight – 0,38 kg
• Materials: aluminium cast of AK 11 (AISI 11), gaskets - rubber

### „MOLE” 52 – SEWER CLEANING ADAPTER / BASE

It is used for cleaning sewers from mud and sludge from the drains and ditches. High-pressure stream penetrates the coats lying in the sewer. After changing the ending it creates a washing umbrella.

TECHNICAL PARAMETERS
• Dimension: 52 mm
• Weight: 0,8 kg
• Materials – aluminium cast of AK11, alloy coast, gaskets - rubber



### „MOLE” 25 – SEWER CLEANING ADAPTER / BASE

It is used for cleaning sewers from mud and sludge from the drains and ditches. High-pressure stream penetrates the coats lying in the sewer. After changing the ending it creates a washing umbrella.

TECHNICAL PARAMETERS
• Dimension: 25 mm
• Weight: 0,3 kg
• Materials – aluminium cast of AK11, alloy coast, gaskets - rubber



### ALUMINIUM HYDRANT VALVE 25



Hydrant valve ZH-25 is used as one of the elements included in the internal hydrant 25.

TECHNICAL PARAMETERS
• Nominal diameter: 25 mm
• Weight: 0,4 kg
• Working pressure: 1,2 MPa
• Materials: aluminum alloy cast AK 11 ( AISi 11 ), brass M058, gaskets: hard rubber

### ALUMINIUM HYDRANT VALVE 52



Hydrant valve ZH-52 is used as one of the elements included in the internal hydrant 52.

TECHNICAL PARAMETERS
• Working pressure: 1,6 MPa
• Adapter's rated diameter: 52 mm
• Connection diameter: 2"
• Diameter of a circle: 100 mm



### MINING BRASS VALVE



Brass hydrant valve is used to opening and closing flow of water from the fire hydrant or pump. It can be used in underground mines.

TECHNICAL PARAMETERS
• Maximum working pressure: 2,5 MPa
• Adapter's rated diameter" 52 mm
• Connection diameter: 2"
• Diameter of a circle: 100 mm



Brass Hydrant valve ZH-25 is used as one of the elements included in the internal hydrant 25.

TECHNICAL PARAMETERS
• Rated diameter: 25 mm
• Weight: 0,48 kg
• Working pressure: 1,6 MPa
• Connection diameter: 1"

### BRASS HYDRANT VALVE Ø25



Brass Hydrant valve ZH-52 is used as one of the elements included in the internal hydrant 52.

TECHNICAL PARAMETERS
• Rated diameter: 52 mm
• Weight: 0,48 kg
• Working pressure: 1,6 MPa
• Connection diameter: 2"

### BRASS HYDRANT VALVE Ø52



Hydrant valve of PZ 31-2,5" type is used for water flow control in hydrant or pump systems. It is designed for fire protection piping of working pressure up to 2,5 MPa.

TECHNICAL PARAMETERS
• Maximum working pressure: 2.5 MPa
• Rated diameter: 75mm
• Connection diameter: 2 1/2"

### HYDRANT VALVE TYPE PZ-31







### COLLECTOR 2X75/110 PN



**Collector** allows delivery of water to the 110 hose from the two power sources of the 75 hose. The backflow valve allows for automatic shut-off of one the inlets in the case of a large differential power pressure.

TECHNICAL PARAMETERS	
• Inlet - 2x75	
• Outlet - 110	
• Tightness: 2 MPa	
• Materials: aluminum alloy cast AK 11 ( AISi 11 ), brass M058, gaskets: hard rubber	

### DIVIDERS RK-75/52-52



**Dividers** are used for distributing the extinguishing medium from one feed line over several hose lines. Each hose line can be shut-off individually.

TECHNICAL PARAMETERS		
Inlet	Outlet	Weight
75/B	2 x 52/C	5.25 kg

### DIVIDERS RK-75/52-75-52



**Dividers** are used for distributing the extinguishing medium from one feed line over several hose lines. Each hose line can be shut-off individually.

TECHNICAL PARAMETERS		
Inlet	Outlet	Weight
75/B	2 x 52/C + 75/B	5.25 kg



### SUCTION STRAINER



**Suction strainer** is the beginning of the suction line and protects the pump from clogging with large debris. Equipped with a check valve to prevent the return of the water, and a lug to fix the float.

#### Suction strainer 75

TECHNICAL PARAMETERS		
Inlet	Dimension (L x W x H)	Weight
75/B	184 x 184 x 208 mm	2.30 kg

#### Suction strainer 110

TECHNICAL PARAMETERS		
Inlet	Dimension (L x W x H)	Weight
110/A	233 x 233 x 252 mm	4.80 kg

### OBLIQUE OUTLET SUCTION STRAINER



**Oblique outlet suction strainer** is used to suck water from the flooded areas and protects the pump against contamination. It has a safety valve protecting from emptying the hose at the break of sucking.

TECHNICAL PARAMETERS			
Size	Outlet	Dimension (L x W x H)	Weight
100	110/A	235 x 300 x 240 mm	4.00 kg

### WATER SHIELD



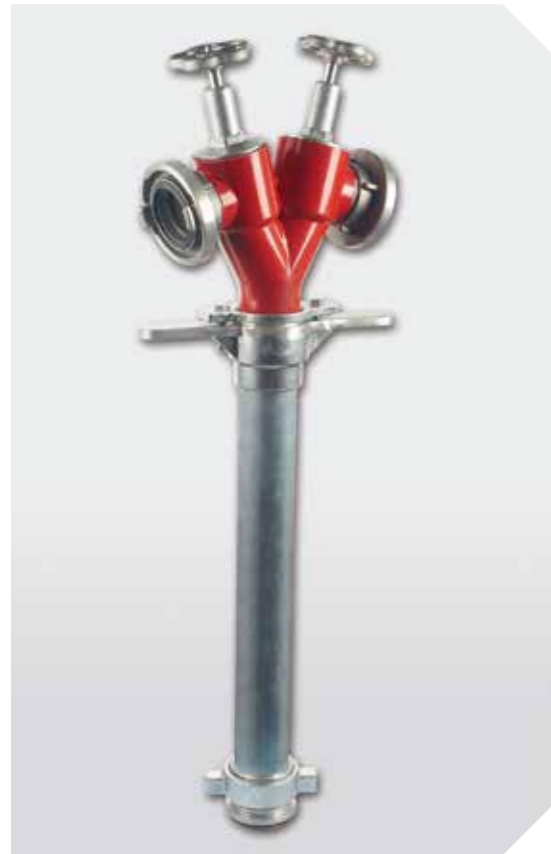
**The curtain nozzles** are used to create a curtain of water in order to reduce the force of fire thermal radiation. They have variable speed, width and height of the stream which is achieved by the rotation of the lever.

TECHNICAL PARAMETERS			
Size	Outlet	Dimension (L x W x H)	Weight
52/C	52/C	205 x 210 x 105 mm	2.05 kg
75/B	75/B	205 x 260 x 130 mm	2.40 kg

#### Flow and width of water curtain wave.

Size	Flow (l/min.)		Wave weight		Wave width	
	5 bar	8 bar	5 bar	8 bar	5 bar	8 bar
52/C	900	1200	9 m	10 m	22 m	25 m
75/B	1400	1800	9.5 m	10.5 m	26 m	29 m

### STANDPIPES FOR UNDERGROUND HYDRANTS



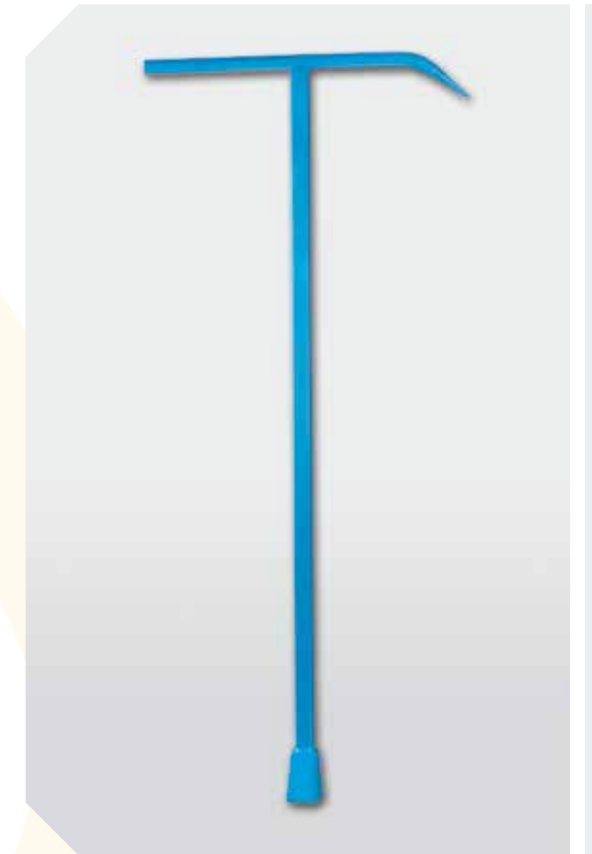
Swivel head, 2 outlets and screw down valve

#### TECHNICAL PARAMETERS

- DN 80
- Weight: 7,65 kg
- Working pressure: 1 MPa

### UNDERGROUND HYDRANT'S SPANNER

Underground hydrant's spanner are designed to open and close the above-ground hydrants.



#### TECHNICAL PARAMETERS

- Length: 1100 mm
- Width: 480 mm
- Height: 50 mm
- Weight: 5.4 kg
- Hole: square 35x35 mm

### GASKETS



Designed for STORZ type fittings.

#### DOSTĘPNE ROZMIARY

25	Suction - Delivery
52	Suction - Suction - Delivery
75	Suction - Suction - Delivery
110	Suction - Suction - Delivery

### UNIVERSAL SPANNER K6 TYPE

Universal spanner K6 is designed to open and close the above-ground hydrants, as well as fittings and adaptors in the STORZ system.



#### TECHNICAL PARAMETERS

- Length: 360 mm
- Width: 160 mm
- Bigness: 10 mm



### HYDRANT NOZZLE Ø25 AND Ø52



**Hydrant nozzles** are used to opening, closing and steady regulation of performance for different kinds of water flush in fire fighting equipment. Rotating nozzle allows stepless adjustment of water jets.

TECHNICAL PARAMETERS
• Working pressure: 1,2 MPa
• Capacity at the pressure of 0,2 MPa: 100 -150 l/min
• Capacity at the pressure of 0,6 MPa: 170-220 l/min
• Waterjet reach at the pressure of 0,2 MPa: compact water jet 10m, diffuse water jet 3 m.

### HS NOZZLE Ø52



**HS nozzles** are used to opening, closing and steady regulation of performance for different kinds of water flush in fire fighting equipment. Rotating nozzle allows stepless adjustment of water jets.

TECHNICAL PARAMETERS
• Inlet: 52/C
• Length: 283 mm
• Weight: 0.88 kg
• Flow: Compact water jet – 150 l/min, Diffuse water jet – 440 l/min
• Range: Compact water jet – 27 m, Diffuse water jet – 12 m

### UNIVERSAL NOZZLE PW-52/R, PW-75/R, PW-25/R



**Universal nozzles** are used to opening, closing and steady regulation of performance for different kinds of water flush in fire fighting equipment. The nozzles can be used in different positions: Closed, Straight Stream, Narrow Fog.

TECHNICAL PARAMETERS
• Adapter – D-25, C-52, B-75
• Length: 418 mm
• Height: 156 mm
• Weight: 1.3 kg



**Ultriflow nozzle** provides superior performance in most cases associated with fighting fires. Resistant to damage is suitable for use in fresh water and fire-fighting foams.

TECHNICAL PARAMETERS
• Adapter: 52/C
• Flow: 40-400 l/min
• Working pressure: 7 bar
• The spool valve of the flow control valve allows for great water jet in all positions of the valve
• Quick control of the flow shape (compact – diffuse)
• Position of „strong fog”
• Easy flushing during the flow for the removal of trapped pollutions

**Nozzles** are designed to produce compact and diffuse water jets at the ends of hoses in fire-fighting vehicles, as well as motopumps cabinets.

TECHNICAL PARAMETERS
• Adapter: 52/C
• Flow: 40-400 l/min
• Working pressure: 7 bar

**Water nozzles** are used to opening, closing and steady regulation of performance for different kinds of water flush in fire fighting equipment. Rotating nozzle allows stepless adjustment of water jets.

TECHNICAL PARAMETERS
• Adapter: 52/C
• Flow: 40-400 l/min
• Working pressure: 7 bar

### ULTI-FLOW NOZZLE



### MANUAL TURBO NOZZLE



### WATER NOZZLE Ø52







**Fire Fighting Equipment Company**  
**LESZEK KORUS**

44-280 Rydułtowy  
ul. Raciborska 279  
tel./fax: +48 32 457 88 65  
e-mail: [biuro@korus.pl](mailto:biuro@korus.pl)

**[www.korus.pl](http://www.korus.pl)**