

## **Pump**

Centrifugal pump

Used for circulation and transfer of clean, chemical, non-aggressive water and other liquids

Suitable for water supply and irrigation

Water circulation in air-conditioning

## **Operating Conditions**

Delivery: up to 220 m<sup>3</sup>/h

Head: up to 95 m

Liquid temperature:

Standard: -10°C to 85°C Upon request: -20 to 120°C

Maximum operating pressure: 12 bar (PN12)

Anti-clockwise rotation when facing pump's suction port

Impeller: AISI304/HT200

Mechanical seal in compliance with DIN 24960

Lubricated by internal recirculating pumped liquid

Counter flange available on request



## **Motor**

Three phase asynchronous, squirrel cage rotor

Closed construction, external ventilation

Insulation class: F

Protection class: IP55

Performance in compliance with CEI 2-3 IEC 34,1)

Max. ambient temperature: +40°C

Overload protection

## **Construction Features**

Single-impeller centrifugal pump featuring axial intake and radial discharge

Inlet and outlet DN in compliance with EN 733 (ex DIN 24255) and UNI 7467

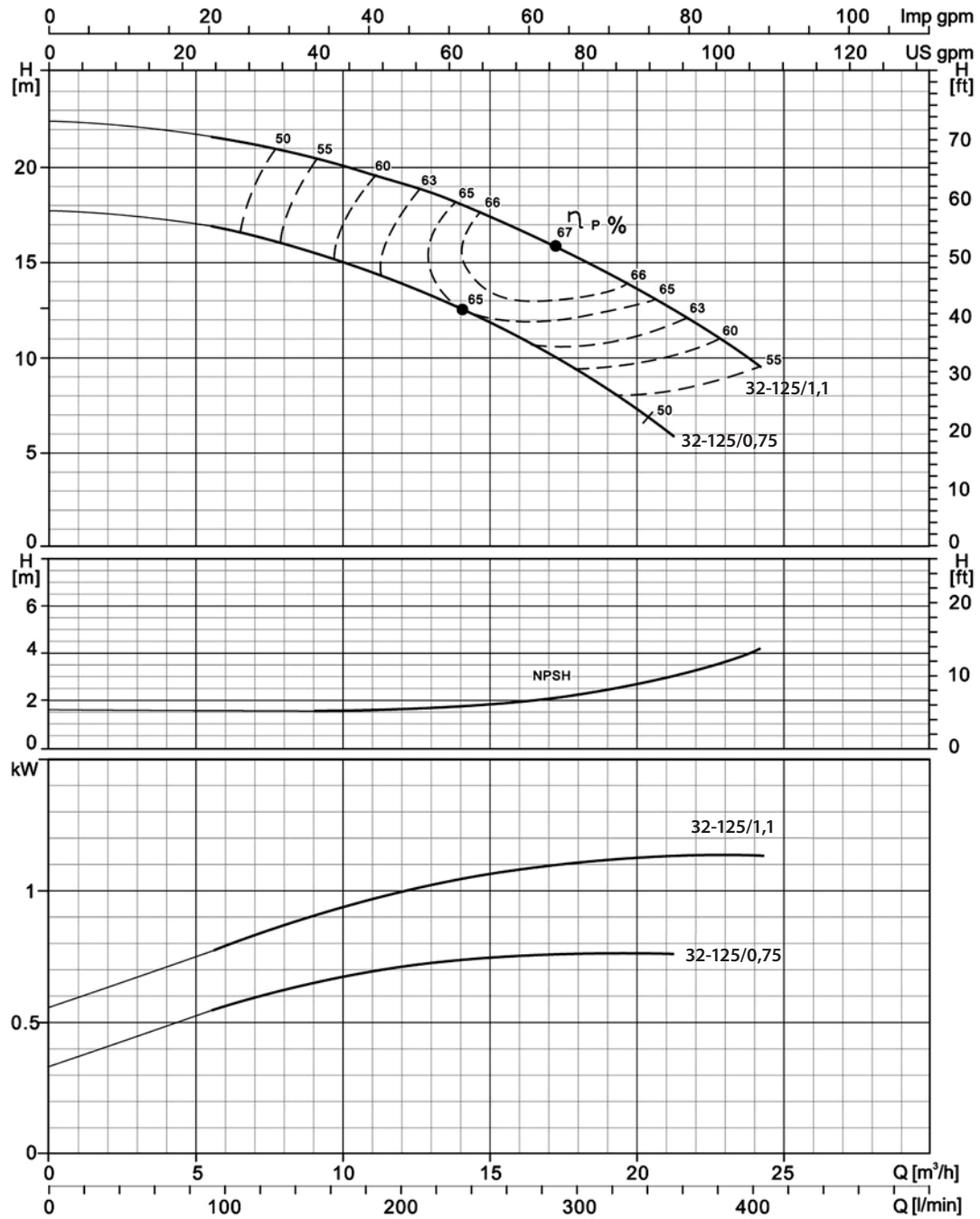
Flanges in compliance with UNI 2236 and DIN 2532

Rear entry (impeller, control valve and motor can be extracted without disconnected the pump body from the pipes)

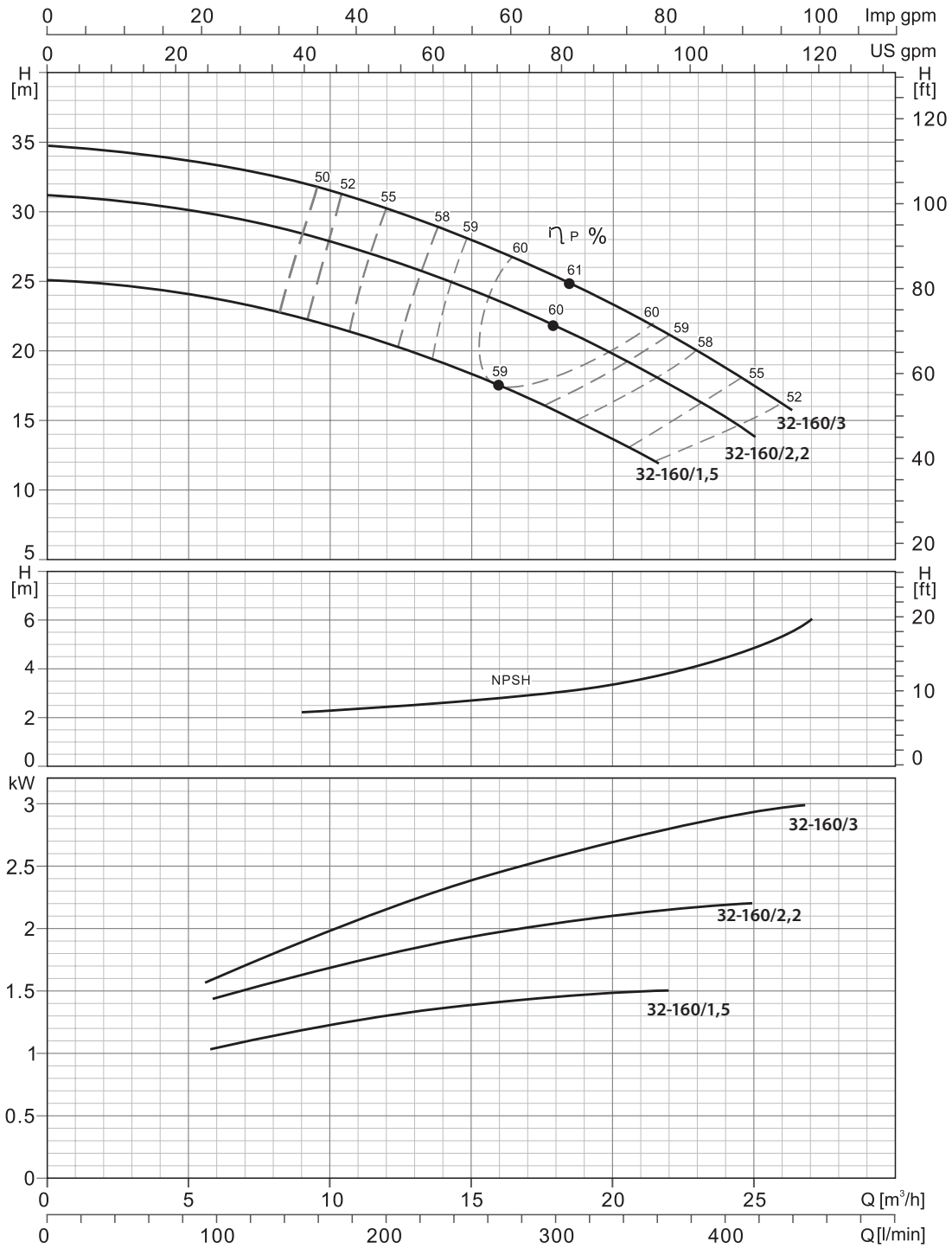
## Technical Data

Pump Type	Power		Q=Delivery																			
			l/min	0	100	150	250	300	400	450	600	700	800	900	1200	1400	1500	1800	2000	2300	3000	3500
	m <sup>3</sup> /h	0	6	9	15	18	24	27	36	42	48	54	72	84	90	108	120	138	180	210		
32-125/0,75	0,75	1		17,5	16,7	15	12	9														
32-125/1,1	1,1	1,5		22	21	19,7	16,5	14,5	9													
32-160/1,5	1,5	2		25,4	23,7	22,5	18,5	15,8														
32-160/2,2	2,2	3		31	29,6	28,5	24,5	22	15													
32-160/3	3	4		35	34,6	34	28	25,5	19	15												
32-200/3	3	4		44,2	43	39,8	35,2	32,2	24,6	19,8												
32-200/4	4	5,5		54,5	52	50	45,5	41,8	35	30,3												
32-250/5,5	5,5	7,5		79,5	74,7	71,8	63	56	37,5													
32-250/7,5	7,5	10		99,5	95	91,8	83	76	57,8													
40-125/1,1	1,1	1,5		14,7				13,5	11,5	10,1	5,8											
40-125/1,5	1,5	2		18,1				17	15	13,9	9,6	6										
40-125/2,2	2,2	3		24,5				23,2	21,5	20,2	16	13	8,3									
40-160/3	3	4		31,8				29,5	27,5	26,3	21,5	17,5										
40-160/4	4	5,5		38				36	34	33	28,5	25	20,1									
40-200/5,5	5,5	7,5		46				43,8	41,3	40,1	35	30										
40-200/7,5	7,5	10		57				53,6	51,5	50	45	41	36,5									
40-250/9,2	9,2	12,5		64				59	56,5	55	49,5	45	39,8									
40-250/11	11	15		72				67,5	65	63,5	57,5	52,2	47									
40-250/15	15	20		84,5				80	77,3	75,2	71	65	61									
50-125/2,2	2,2	3		17							15,4	14	12,8	11,5	6,5							
50-125/3	3	4		20							18,8	18	17	15,6	11							
50-125/4	4	5,5		24							23,1	23	21,5	20,3	15,8	11,8						
50-160/5,5	5,5	7,5		32							30,6	30	28	26,6	20,5	14,8						
50-160/7,5	7,5	10		40							38	37	36	34,4	29	24	21					
50-200/9,2	9,2	12,5	H(m)	50,5							46,8	45	43	40,9	32,5	25,7						
50-200/11	11	15		57,5							53,5	52	50	47,5	40	33	29					
50-250/15	15	20		68,5							64	63	61,5	59	50	41						
50-250/18,5	18,5	25		77							73,2	72	70	68	60,5	51,5	47					
50-250/22	22	30		86,3							83	81,5	80,8	78,7	70	61,9	57					
65-125/4	4	5,5		19									17,3	16,8	14,5	13	11,8					
65-125/5,5	5,5	7,5		23									21,3	20,9	19	17,5	16,7	13,7				
65-125/7,5	7,5	10		27									26	25,6	24,5	23	22,5	20	18			
65-160/9,2	9,2	12,5		33										31,5	30	28	27,1	24	21,5			
65-160/11	11	15		36										34,5	33	31,5	30,8	28	25,5			
65-160/15	15	20		42										41	40	38,5	37,8	35	33	29,5		
65-200/15	15	25		45,5										46	43,5	41	39,2	33				
65-200/18,5	18,5	30		53										53,5	51,2	48,32	47	41,5				
65-200/22	22	30		59										59,5	57,2	54	53	47	43,5			
65-250/22	22	30		62										61,5	58,2	56,5	54	49	45			
65-250/30	30	40		76										75	73	71,5	69,5	64,5	61,5	54		
65-250/37	37	50		90										88,3	86,5	84	83	78	75	68		
80-160/11	11	15		27													27,3	26	24,5	22,5	16	
80-160/15	15	20		32,8													32,5	31,3	30,2	28,5	22,1	16,7
80-160/18,5	18,5	25		39													38	36,8	36,7	33,8	28,8	23,5
80-200/22	22	30		48													47,5	45,5	43,5	41	32,5	24,5
80-200/30	30	45		60													59,5	57	57	54	47	40,5
80-250/37	37	50		71,5													70,5	67,5	65,5	61,5	49,5	38,5
80-250/45	45	61		80													80,5	78,5	76,5	73,4	63,2	51
80-250/55	55	75		92,5													93,5	91,2	89,8	86,8	77,6	68,3

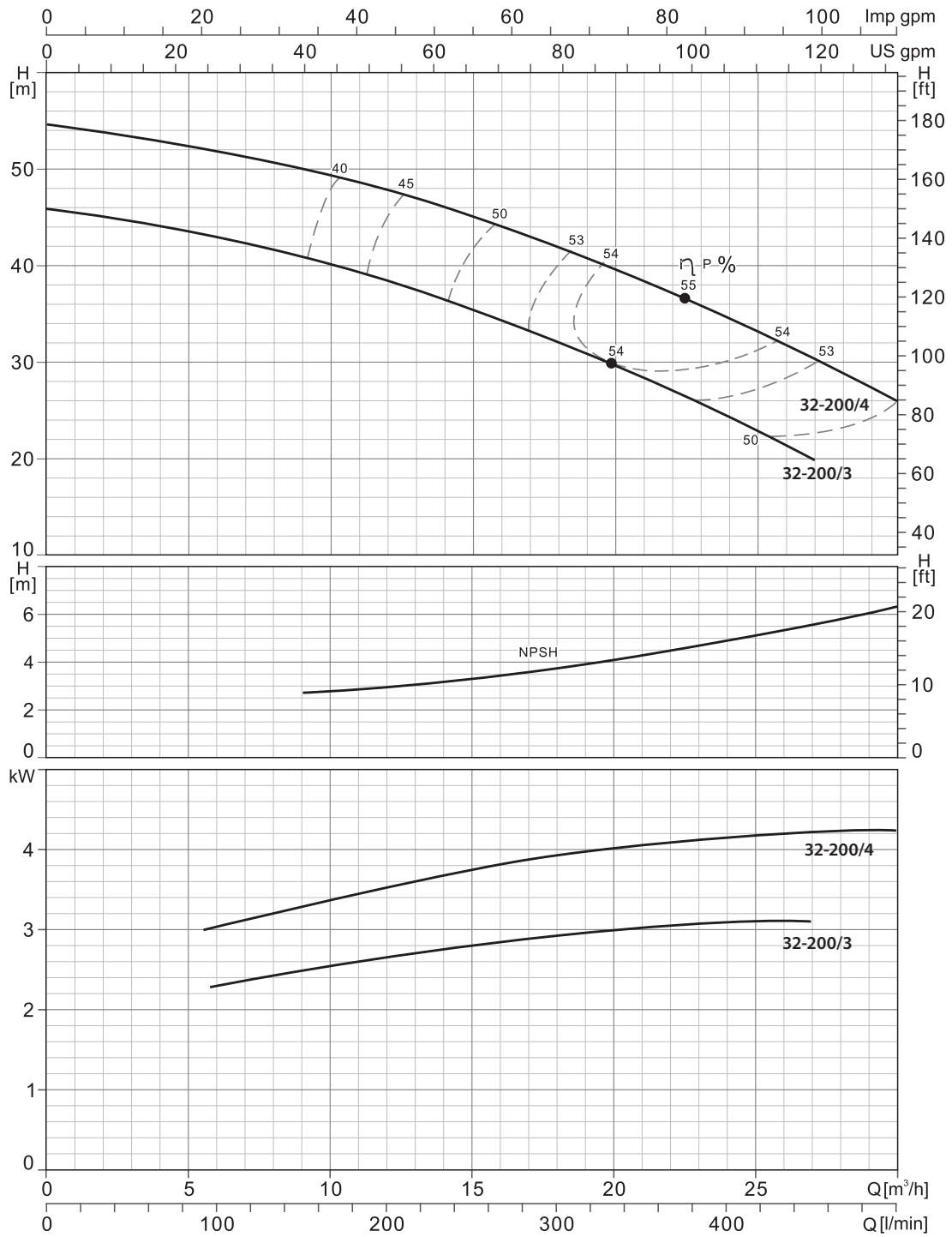
## WTM 32/125 2900 rpm



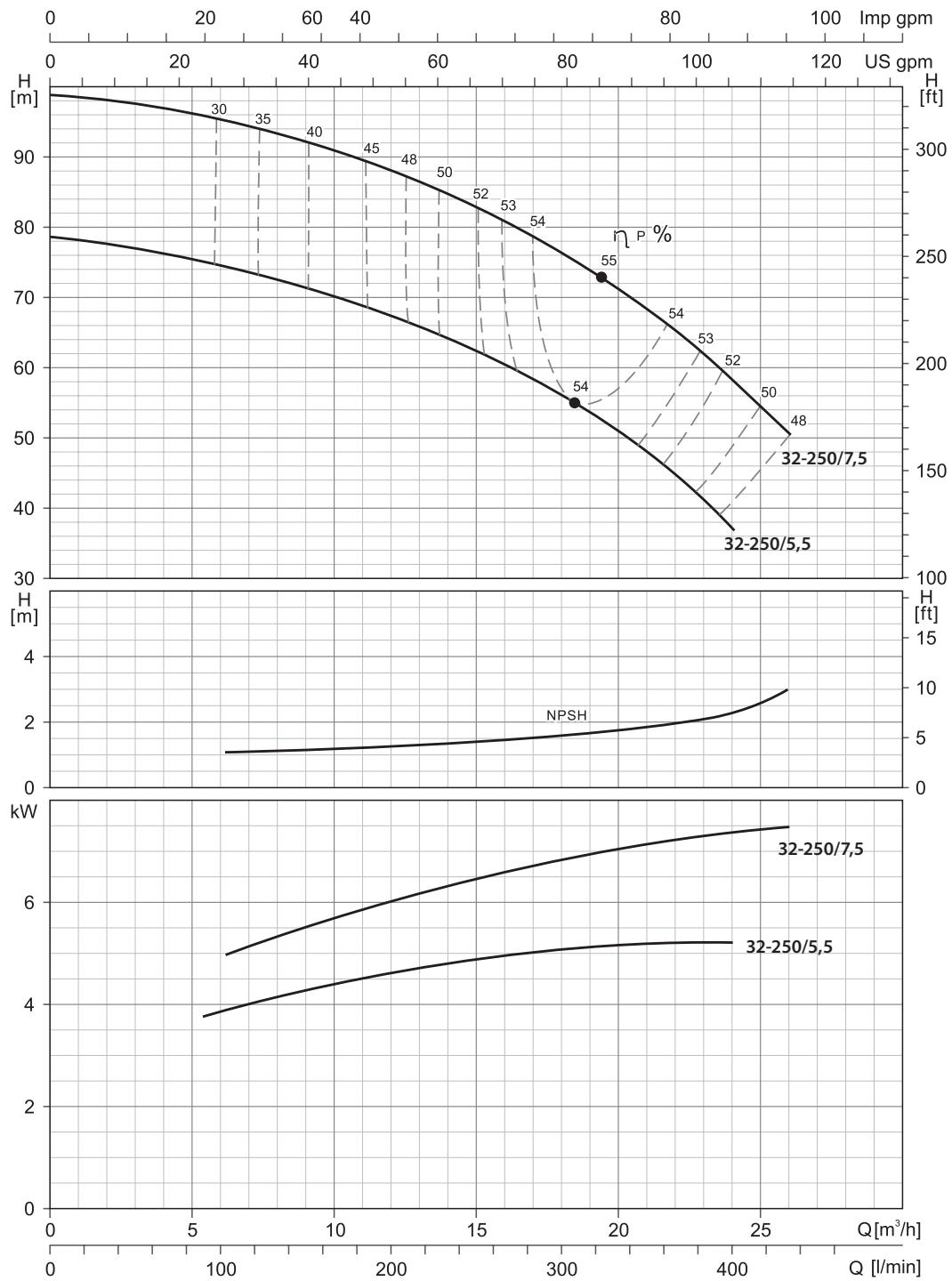
## WTM 32/160 2900 rpm



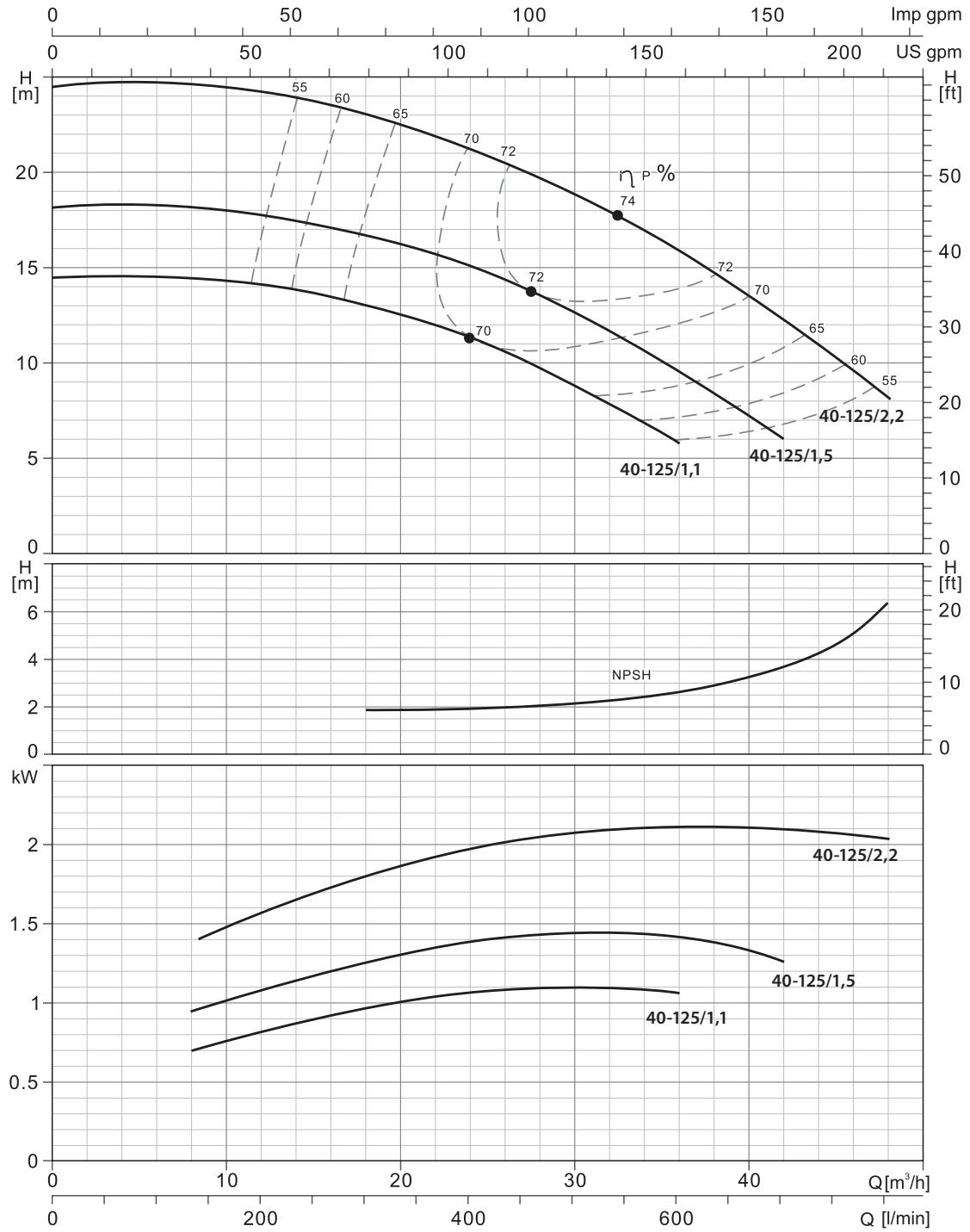
## WTM 32/200 2900 rpm



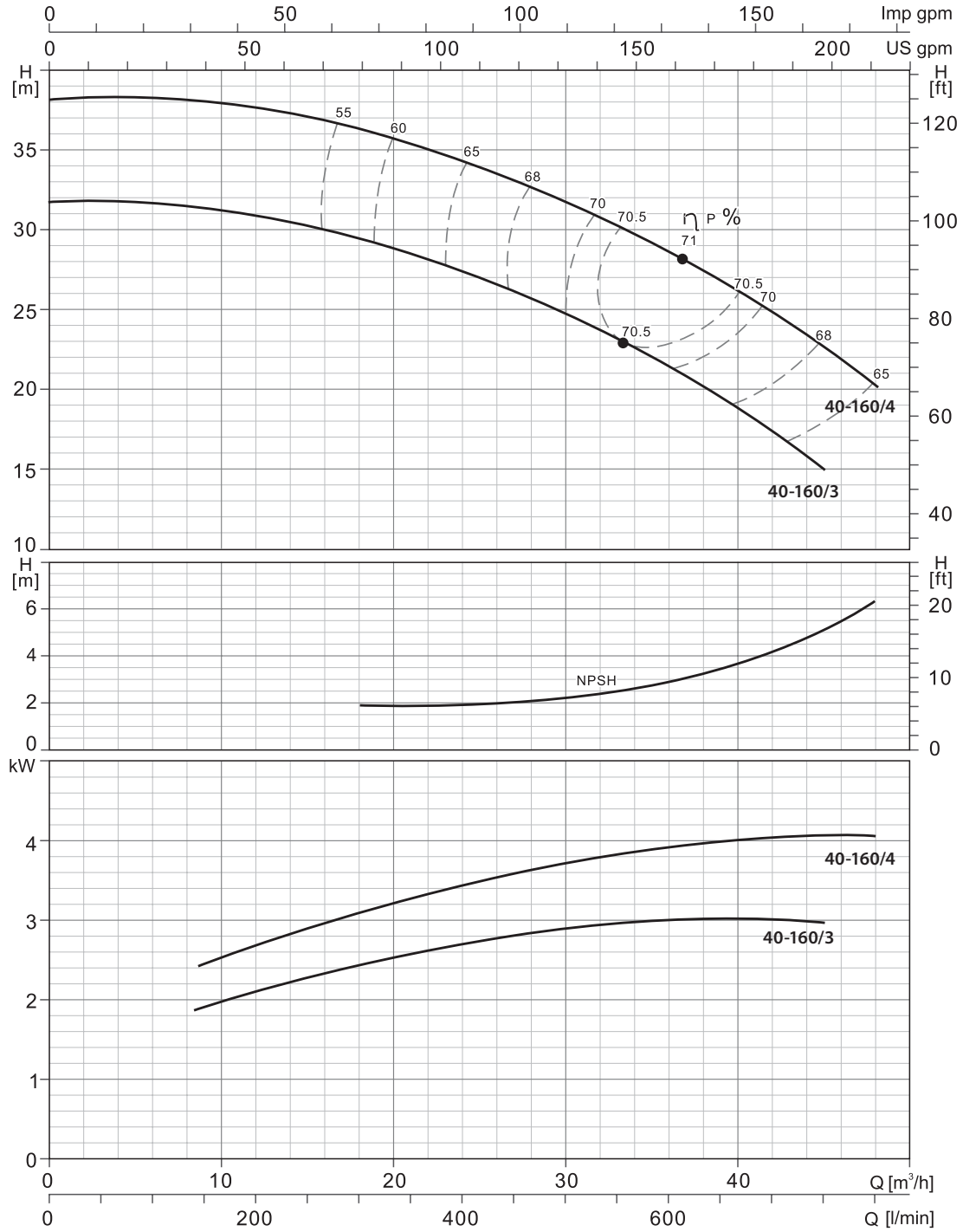
## WTM 32/250 2900 rpm



## WTM 40/125 2900 rpm

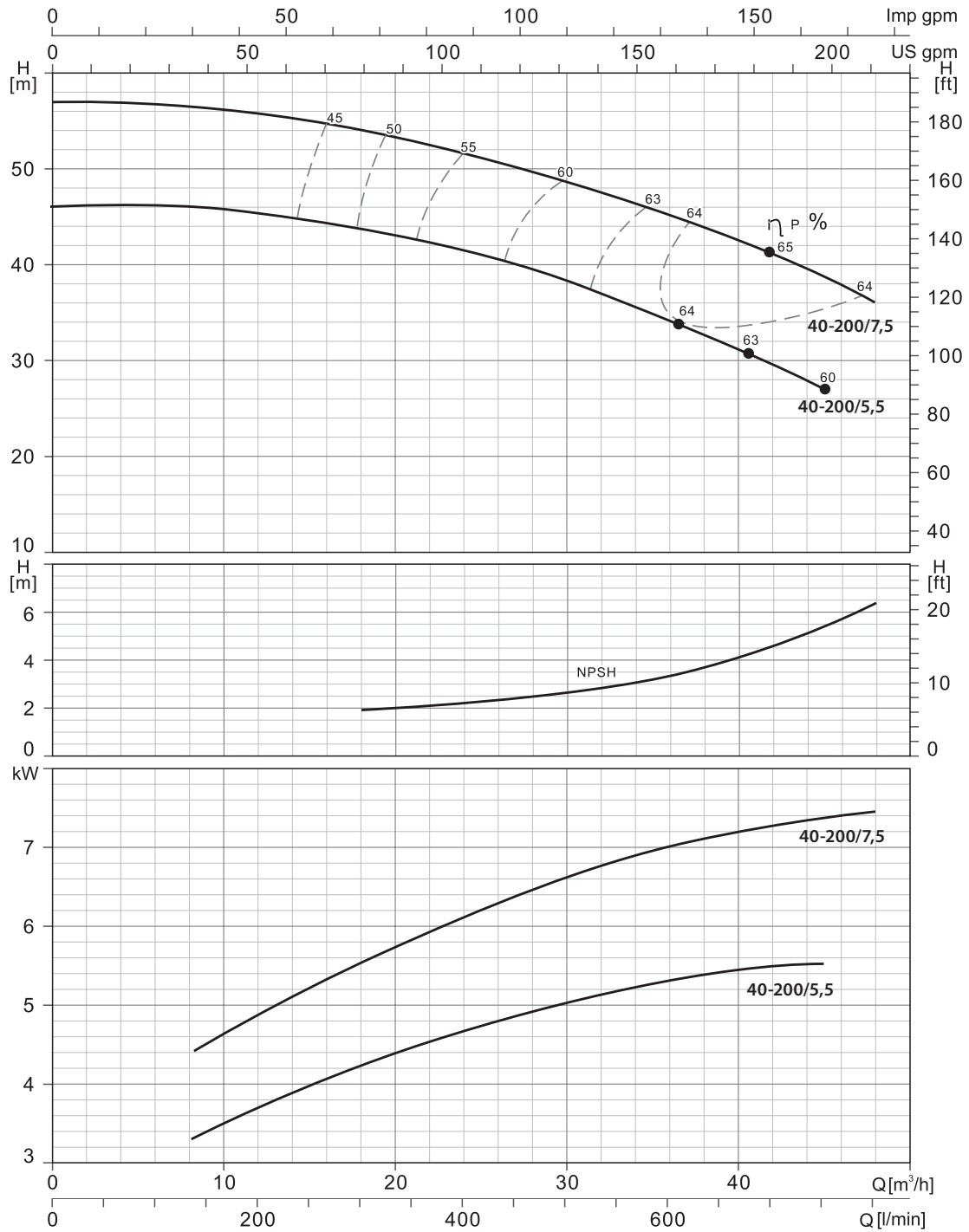


## WTM 40/160 2900 rpm

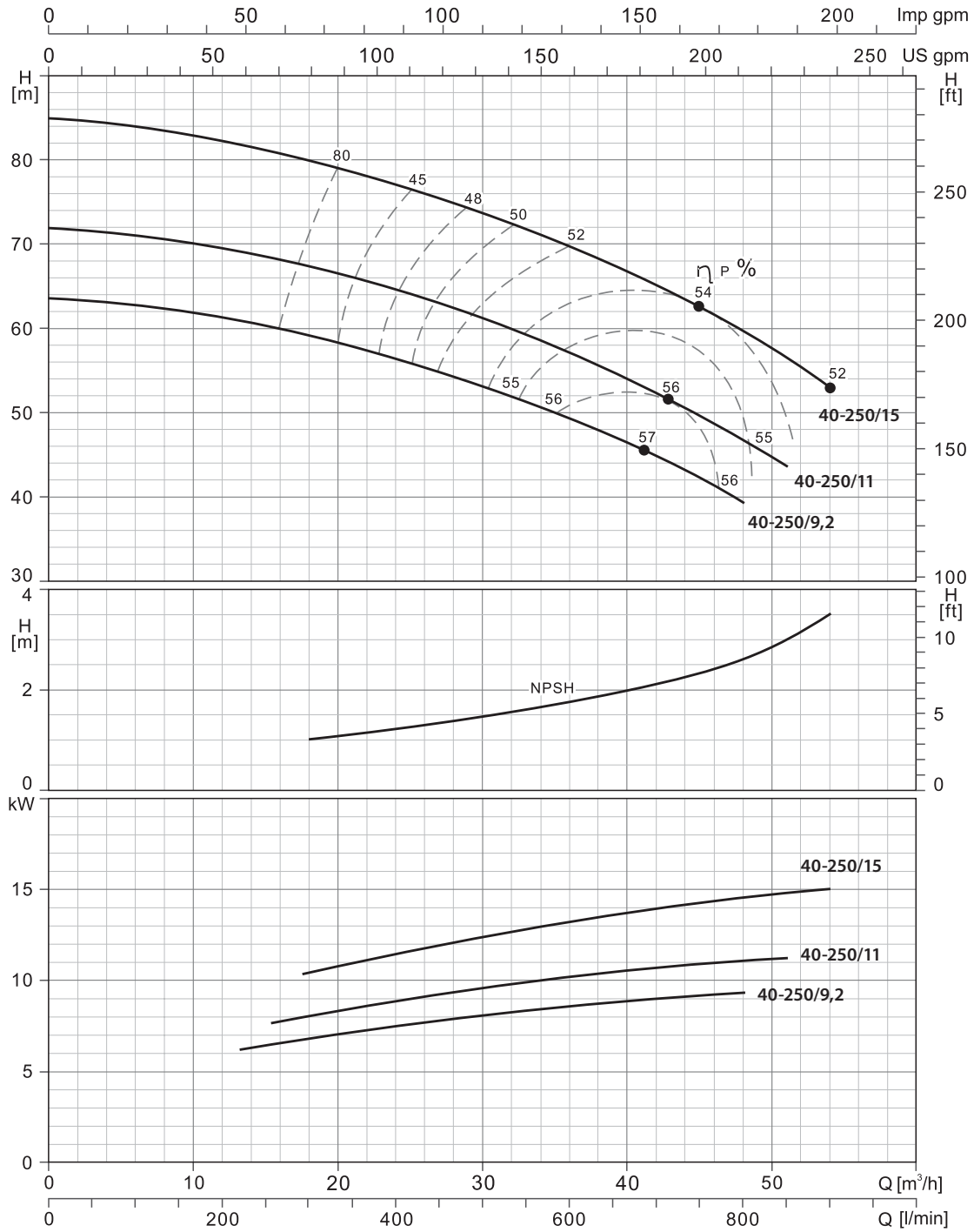




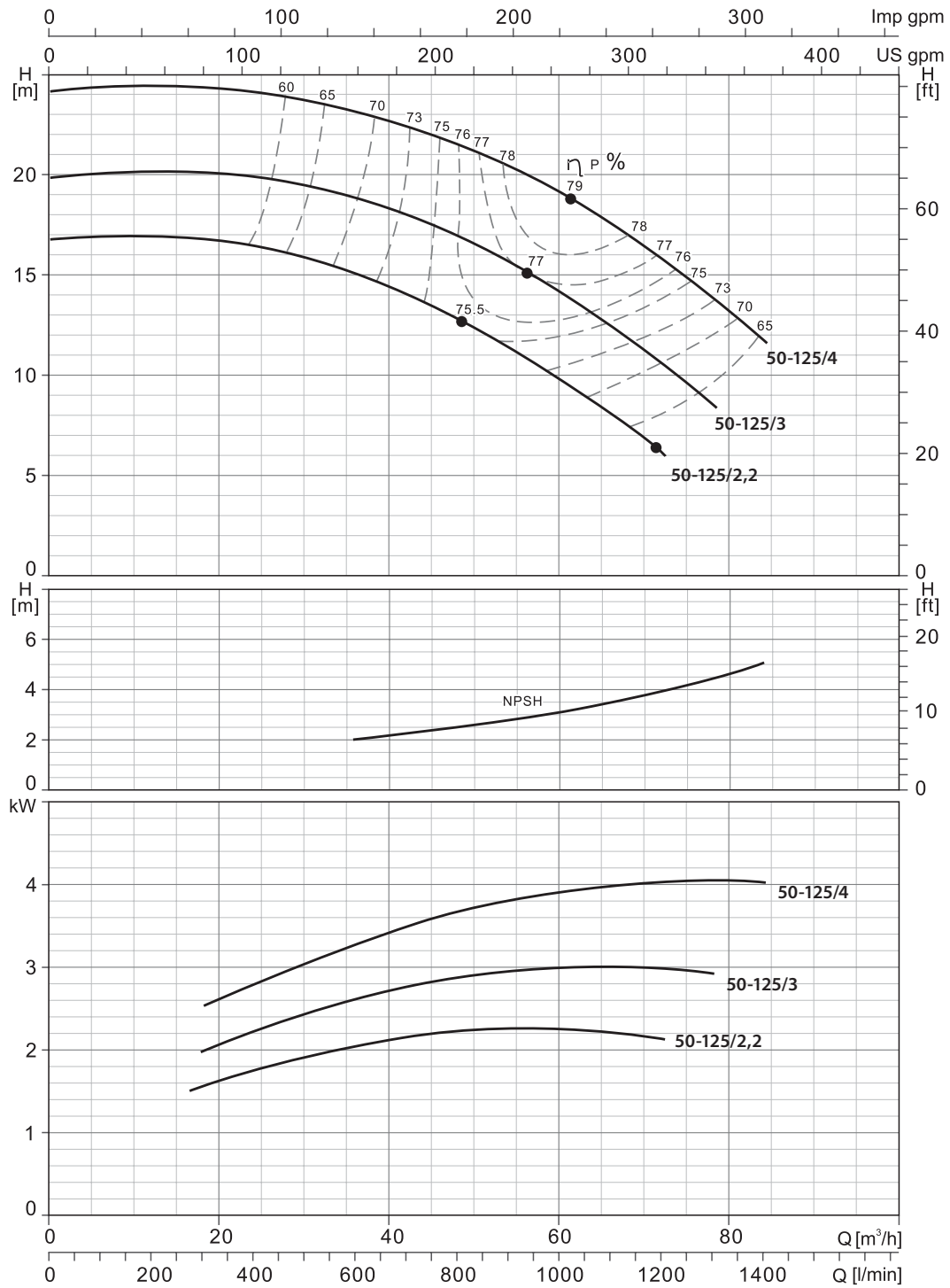
## WTM 40/200 2900 rpm



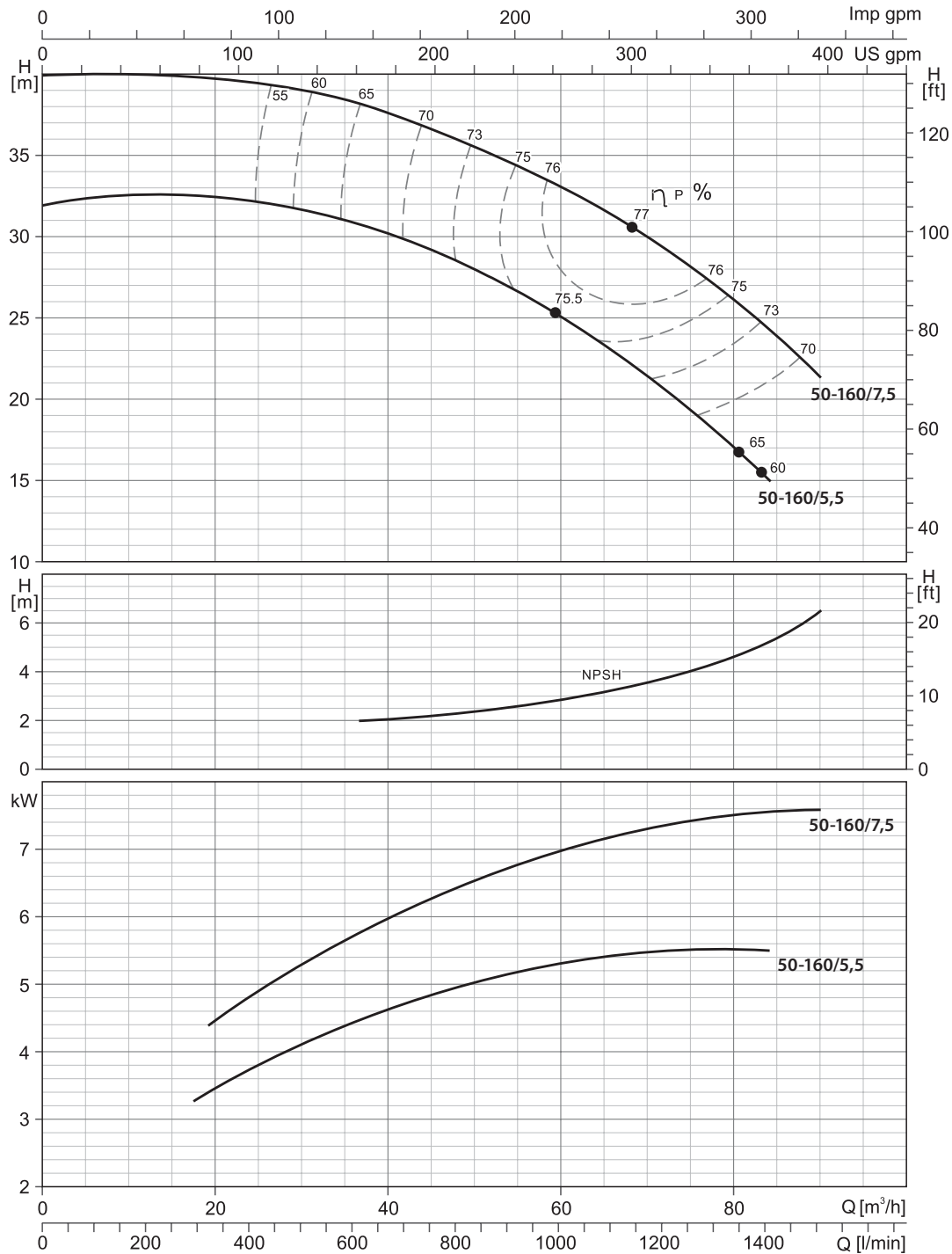
## WTM 40/250 2900 rpm



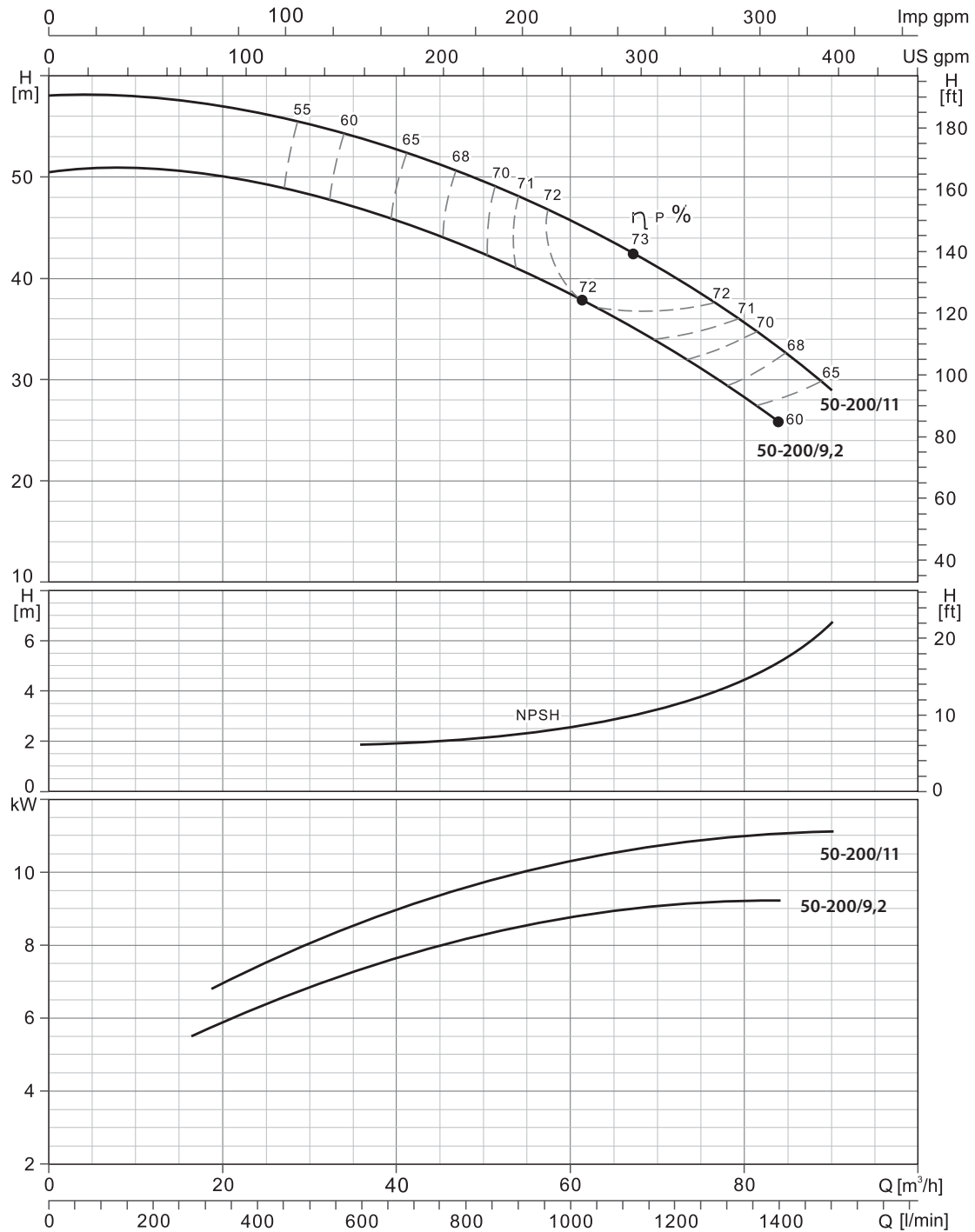
## WTM 50/125 2900 rpm



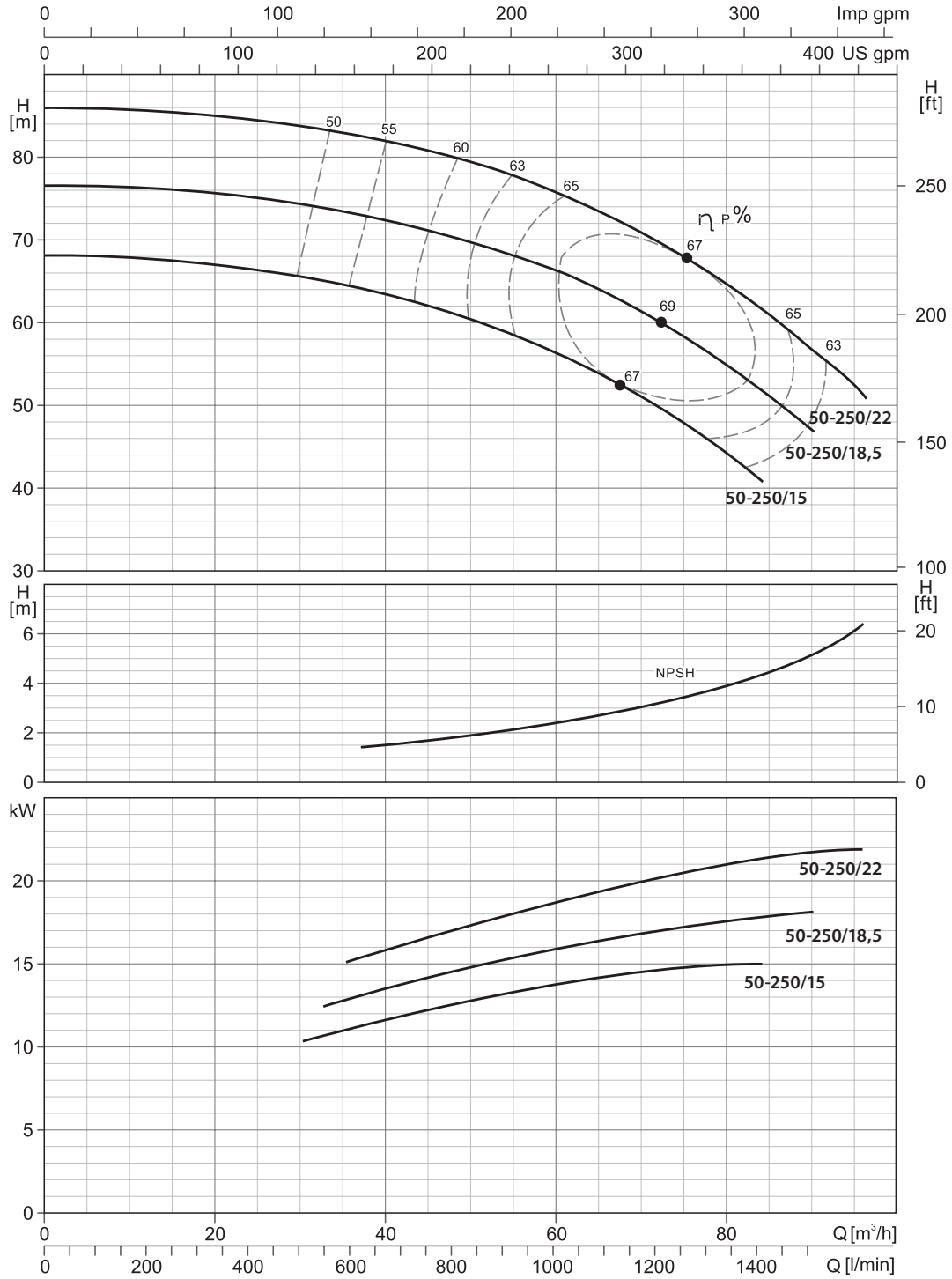
## WTM 50/160 2900 rpm



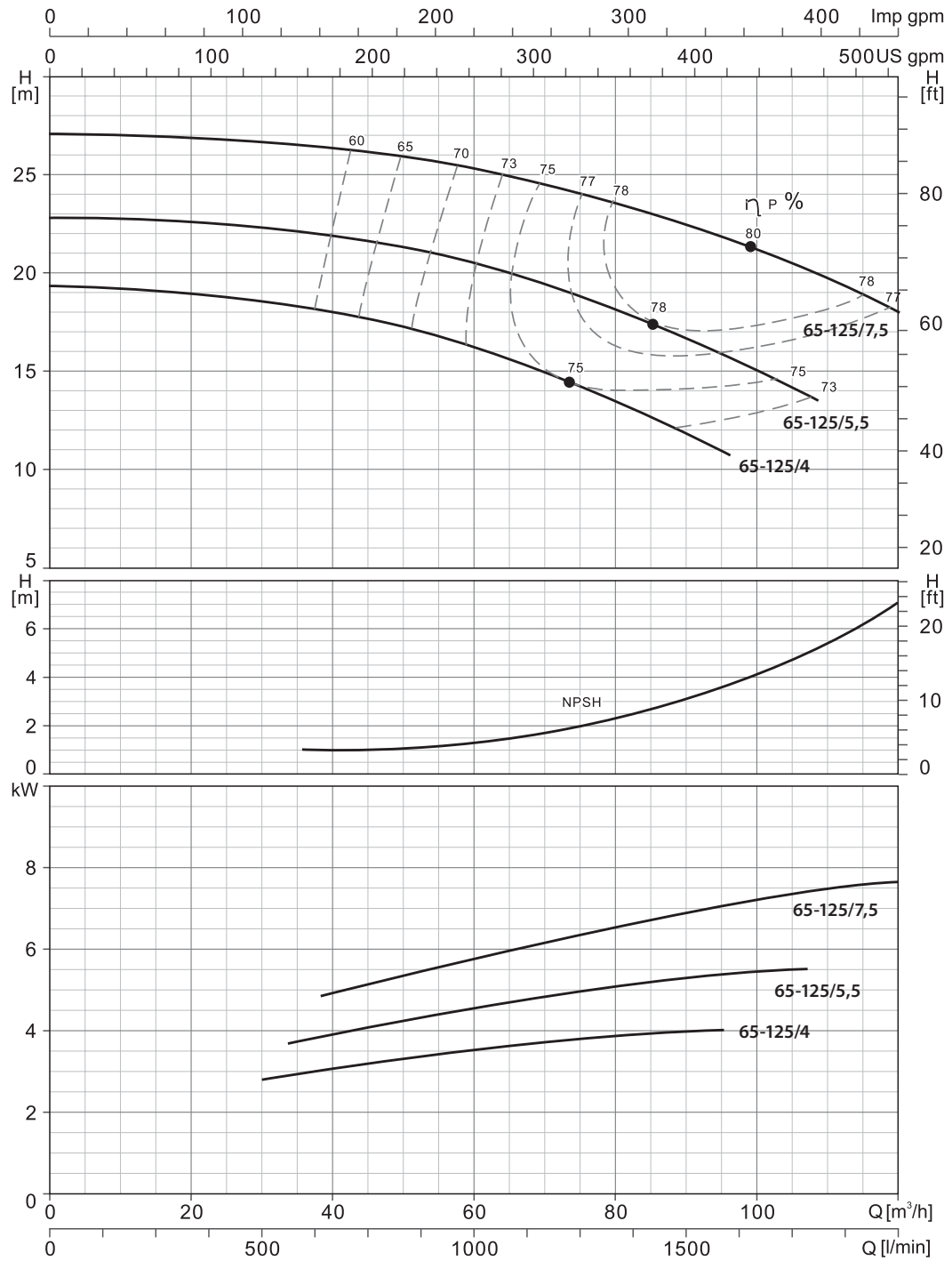
## WTM 50/200 2900 rpm



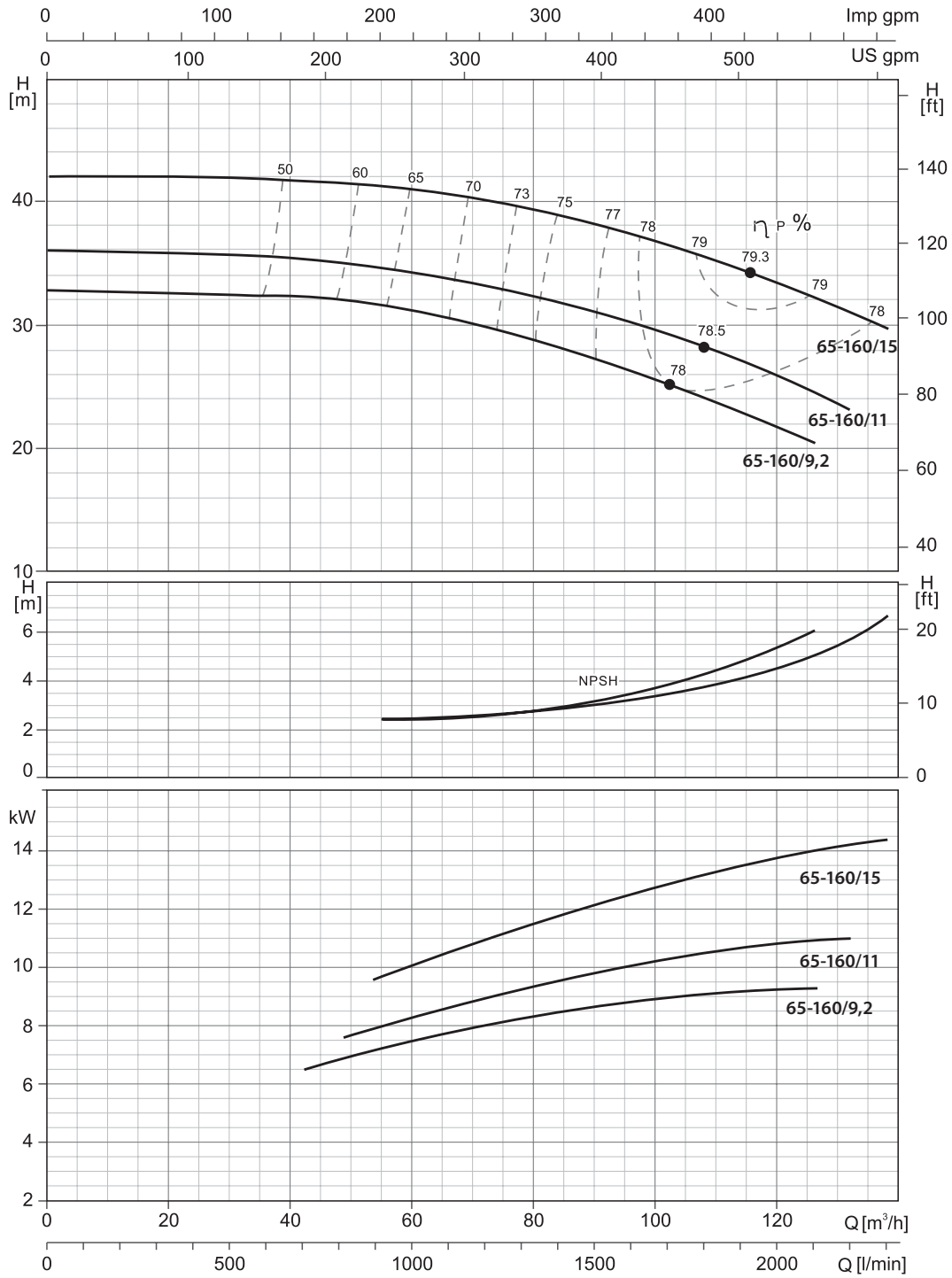
## WTM 50/250 2900 rpm



## WTM 65/125 2900 rpm

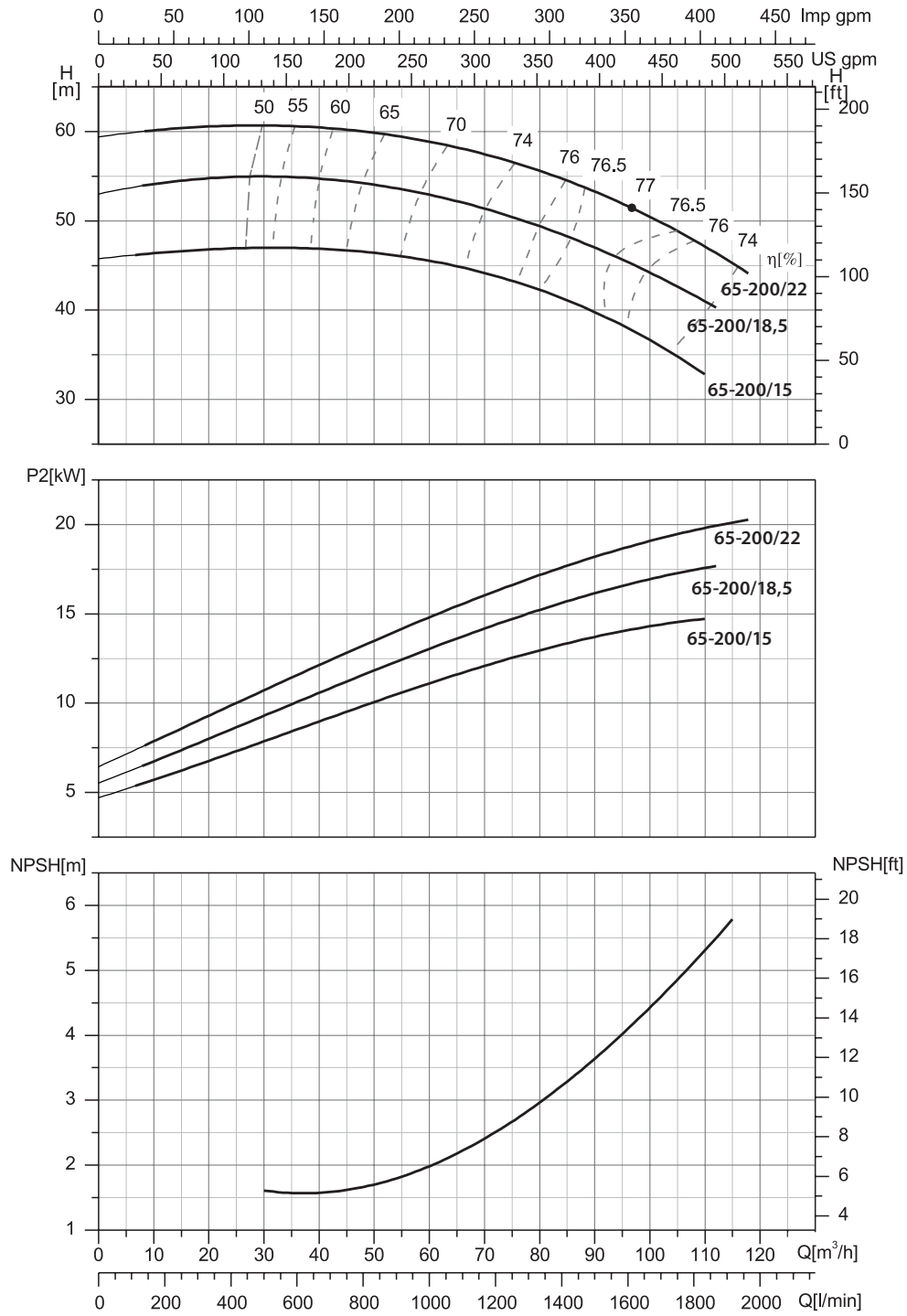


## WTM 65/160 2900 rpm

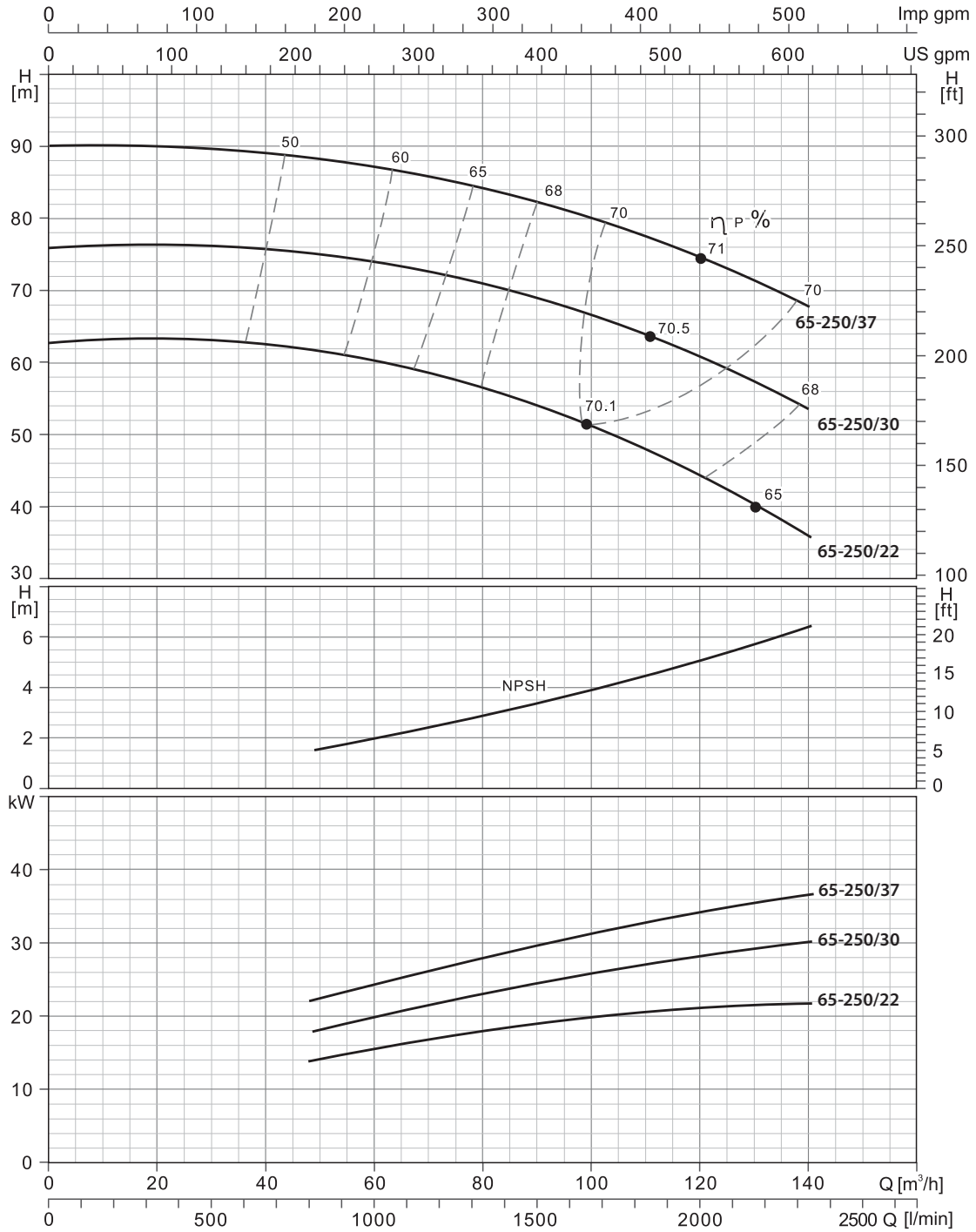




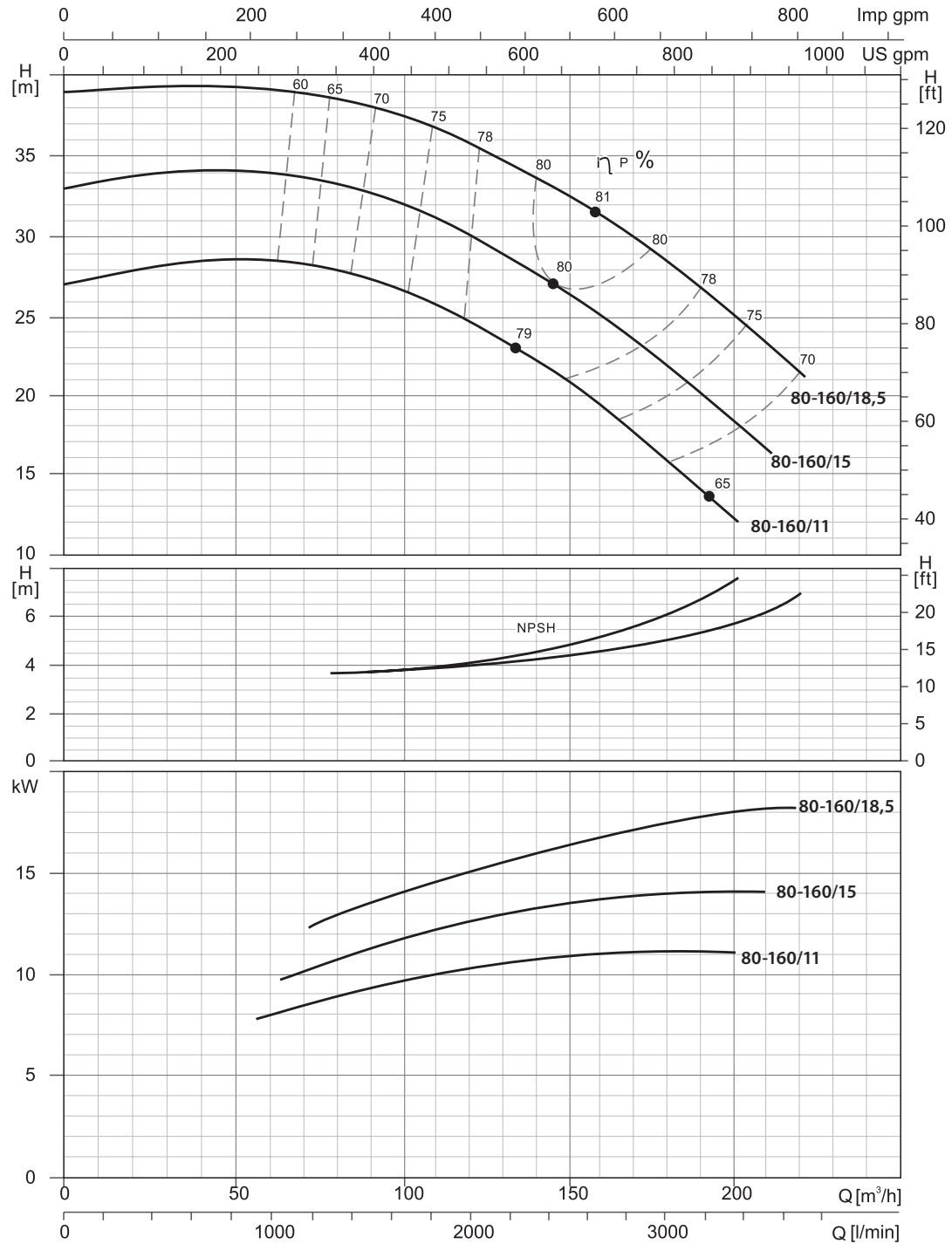
## WTM 65/200 2900 rpm



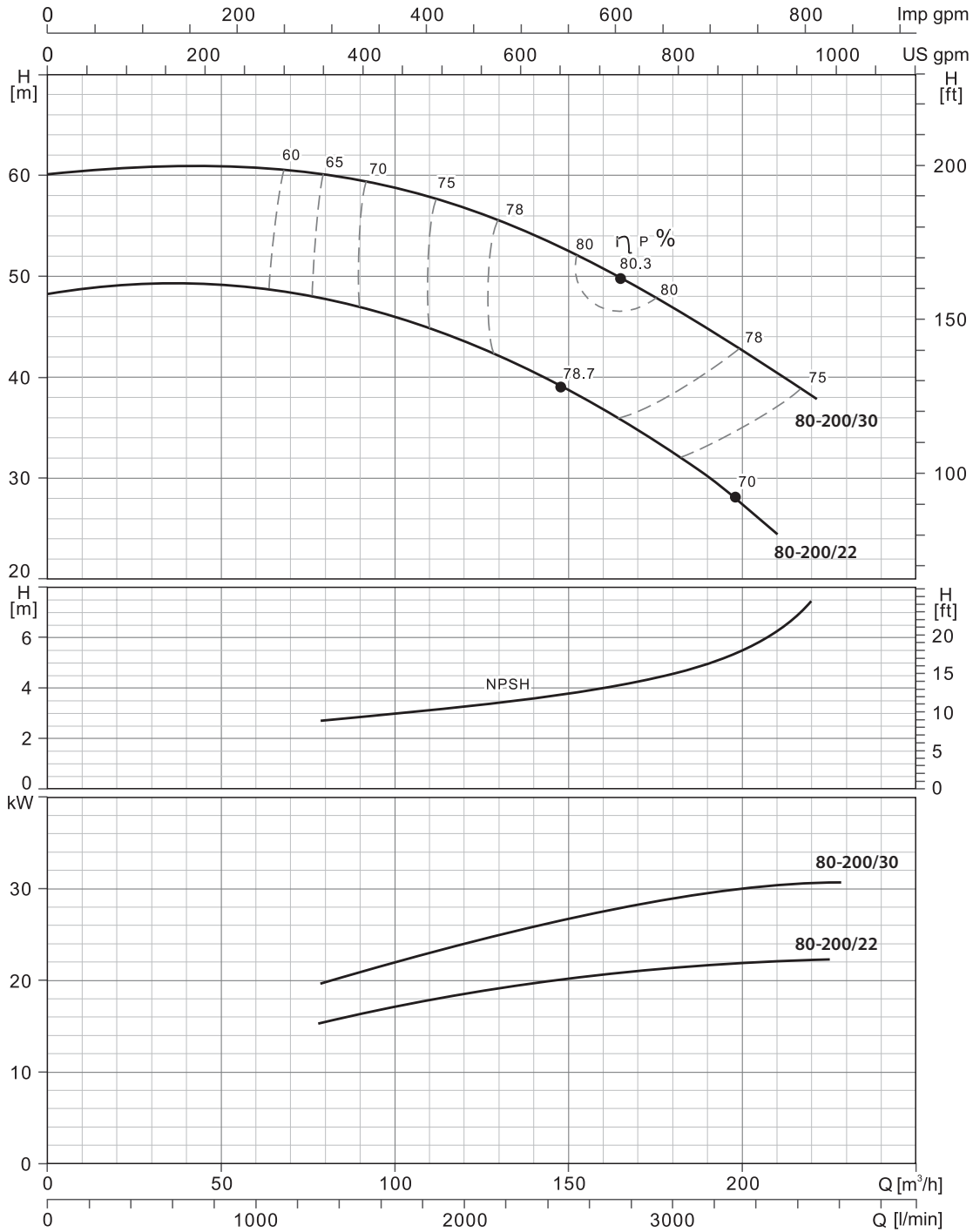
## WTM 65/250 2900 rpm



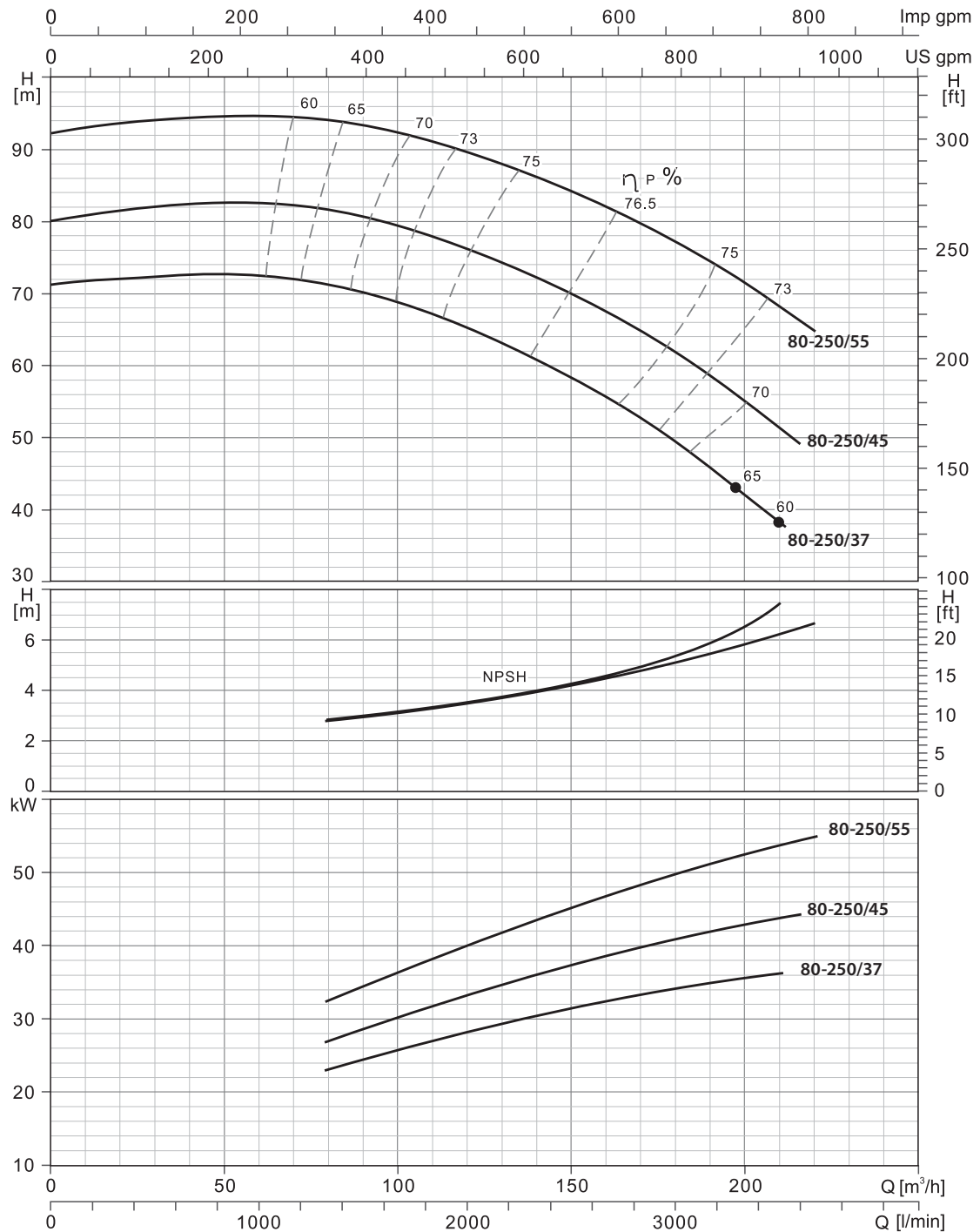
## WTM 80/160 2900 rpm



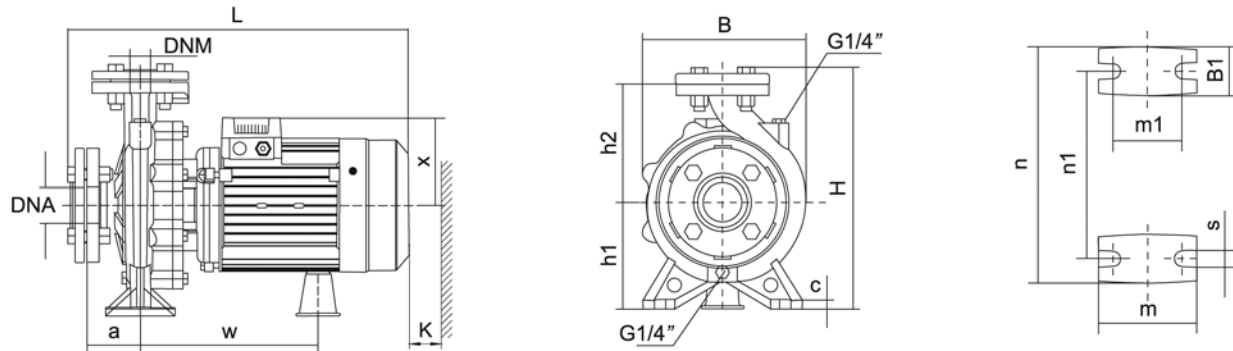
## WTM 80/200 2900 rpm



## WTM 80/250 2900 rpm

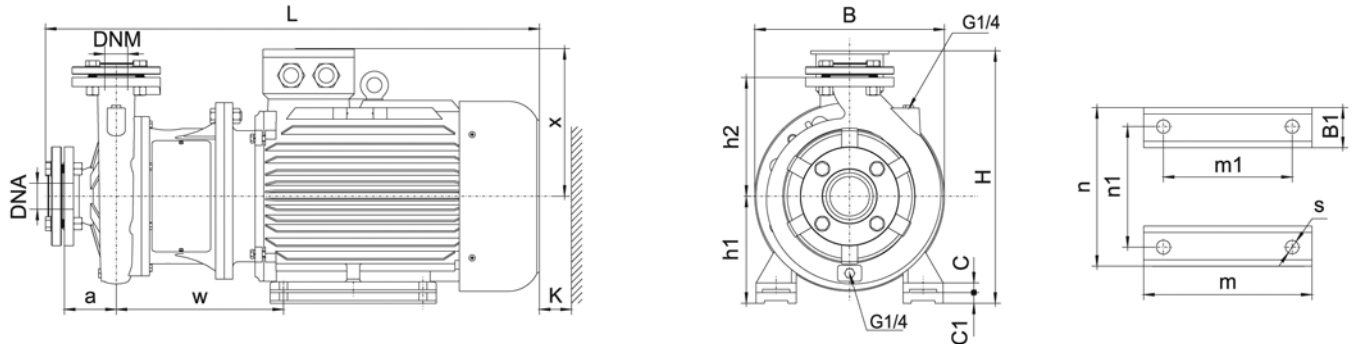


## Installation Sketch up to 7,5 kW (included)



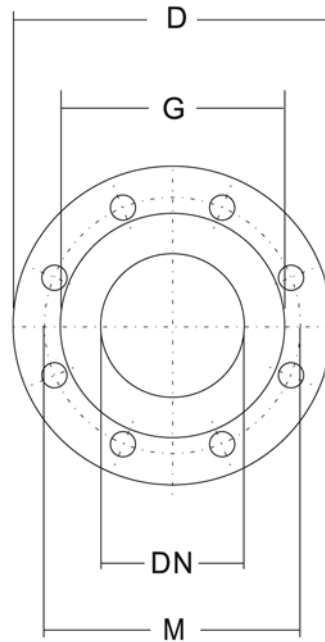
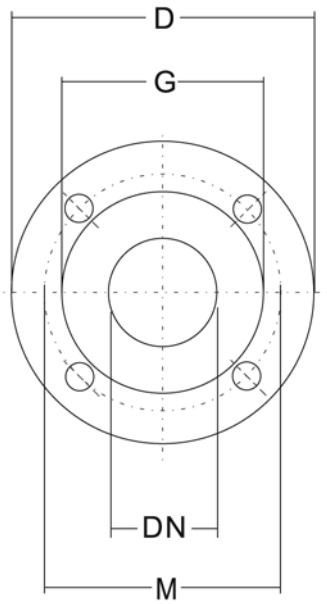
Pump Type	DNM	DNA	a	h2	w	x	B1	c	h1	m	m1	n	n1	s	B	H	L	K		
32-125/0,75	32	50	80	140	223	113	48	12	112	100	70	190	140	17	192	281	428	85		
32-125/1,1				231	123	50	16	132	240								321		430	
32-160/1,5				266	141	132	240	190	496											
32-160/2,2			80	160	266	141	50	16	132	100	70	190	140		240	190	248	369	490	95
32-160/3																				
32-200/3																				
32-200/4			100	230	254	180	65	14	180	125	95	320	250		320	439	557	60		
32-250/5,5																	587			
32-250/7,5																				
40-125/1,1	40	65	80	140	255	127	45	12	112	100	70	210	160	17	218	282	489	95		
40-125/1,5				168	238	127	48	132	240								190			
40-125/2,2				168	238	127	48	132	240								190			
40-160/3			100	180	259	180	50	12	160	100	70	264	212		275	370	553	105		
40-160/4																	583			
40-200/5,5																				
40-200/7,5	100	180	262	127	50	12	132	100	70	260	190	243	322	518	110					
50-125/2,2														556						
50-125/3														586						
50-125/4	50	65	100	180	262	180	52	160	100	70	264	212	272	370	564	110				
50-160/5,5															594					
50-160/7,5																				
65-125/4	65	80	100	180	265	180	68	14	160	125	95	280	212	283	372	564	110			
65-125/5,5																594				
65-125/7,5																				

## Installation Sketch from 7,5 kW



Pump Type	DNM	DNA	a	h2	w	x	B1	C	C1	h1	m	m1	n	n1	s	B	H	L	K																		
40-250/9,2	40	65	100	225	310	260	65	20	20	180	260	210	320	254	15	350	440	845	110																		
40-250/11																																					
40-250/15																																					
50-200/9,2	50	65	100	200	310	260	65	20	-	160	260	210	320	254	15	350	420	845	120																		
50-200/11				20					180	304							254			440	895																
50-250/15																						225	323	275	70	25	-	311	241	355	279	455	925				
50-250/18,5																																					
50-250/22																																					
65-160/9,2	65	80	100	200	310	260	65	20	-	160	260	210	320	254	15	350	420	845	125																		
65-160/11				20					180	304							254			440	895																
65-160/15																						225	323	275	70	25	-	311	241	355	279	355	455	956			
65-200/15																																					
65-200/18,5																						250	253	365	305	70	30	-	200	369	305	395	318	19	400	505	1026
65-200/22																																					
65-250/22																																					
65-250/30																						280	381	330	75	30	-	225	404	311	435	356	19	450	555	1067	
65-250/37																																					
80-160/11	80	100	125	225	315	260	65	20	-	160	260	210	320	254	15	350	420	870	130																		
80-160/15				20						180							304			254	440	926															
80-160/18,5																							250	352	275	70	25	-	180	311	241	355	279	355	461	946	
80-200/22																																					
80-200/30																							280	365	305	70	30	-	200	369	305	395	318	400	505	1016	
80-200/37																																					
80-250/37																																					
80-250/45																							280	381	330	75	30	-	225	404	311	435	356	19	450	555	1067
80-250/55																																					
80-250/55				280	433	365	80		30	280	450	349	490	406	24	550	646	1160																			

## Flange Dimensions



### PN16 Flanges

DN	D	M	G	Holes		Max. Thickness
				N°	∅	
32	140	100	78	4	18	18
40	150	110	88	4	18	18
50	165	125	102	4	18	20
65	185	145	122	4	18	20

### PN16 Flanges

DN	D	M	G	Holes		Max. Thickness
				N°	∅	
80	200	160	138	8	18	22
100	220	180	158	8	18	22